



ForestPaths

Co-designing holistic forest-based policy pathways for climate change mitigation

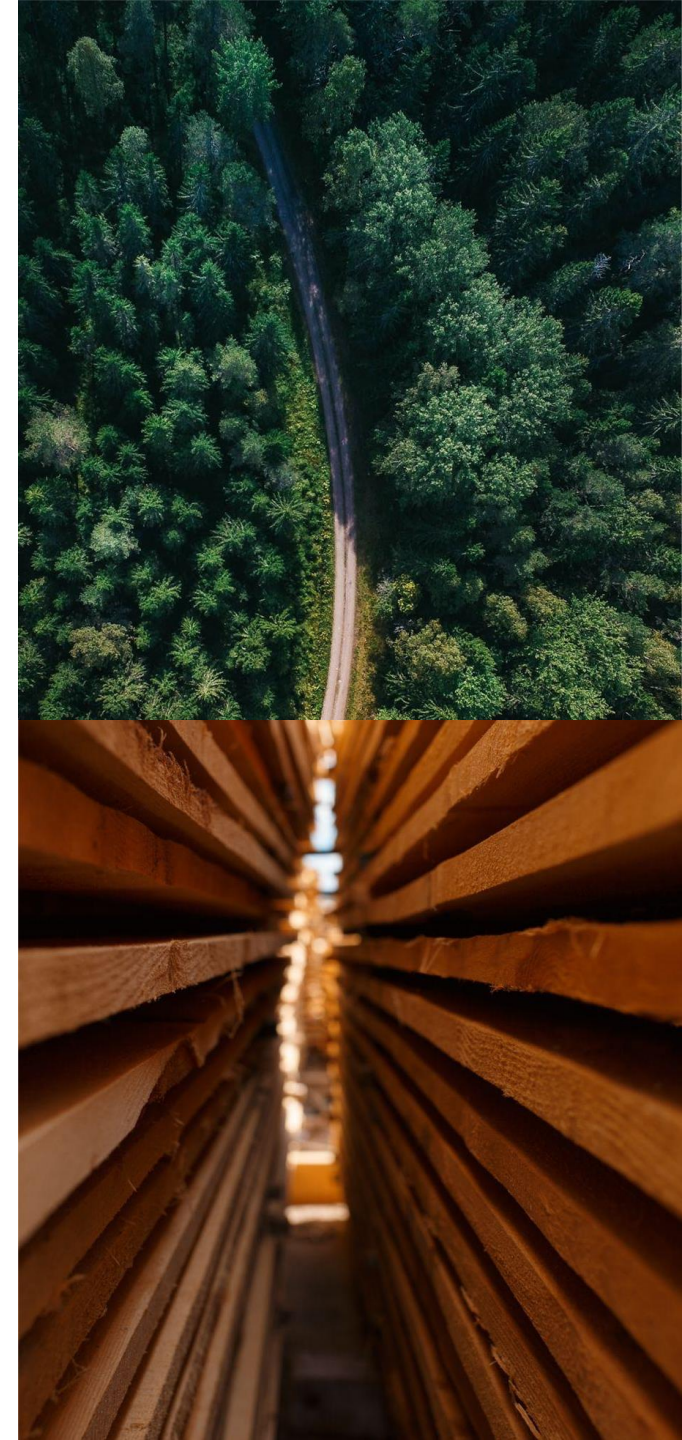
Forest-based policy pathways towards a climate-neutral society: Introducing the ForestPaths project

Hans Verkerk

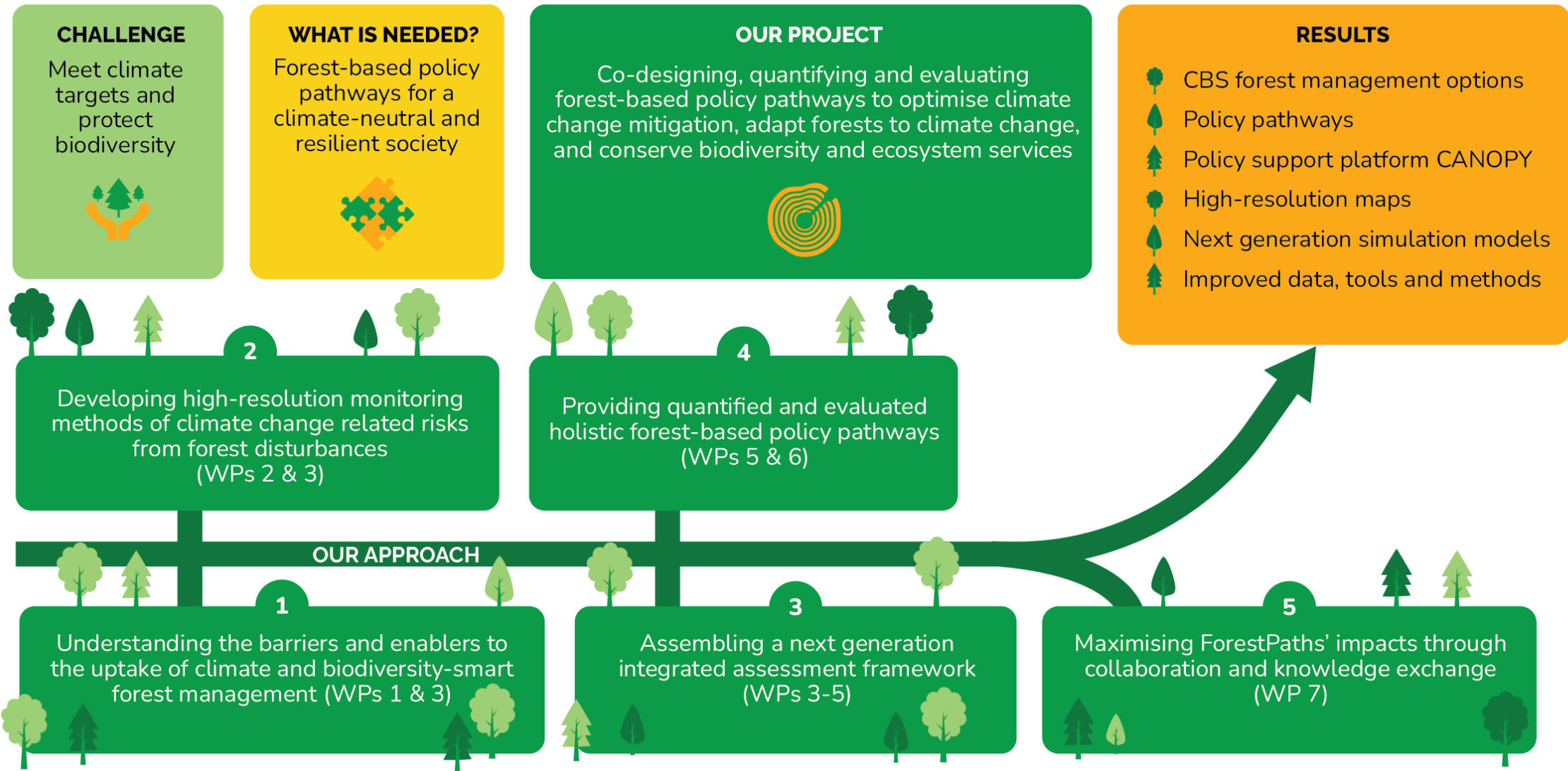
12.5.2023, LULUCF workshop, JRC Ispra and online



Funded by
the European Union



Our approach



Main results



Climate and
Biodiversity-Smart (CBS)
forest management options



Holistic
forest-based
policy pathways



Policy
support platform
CANOPY



Improved
data for understanding
changes in climate on **forest
disturbances**



Next generation
forest ecosystem and
management **simulation
models**



Improved
data, tools and methods
for the European forest-
based sector

Improved data for understanding changes in climate on forest disturbances

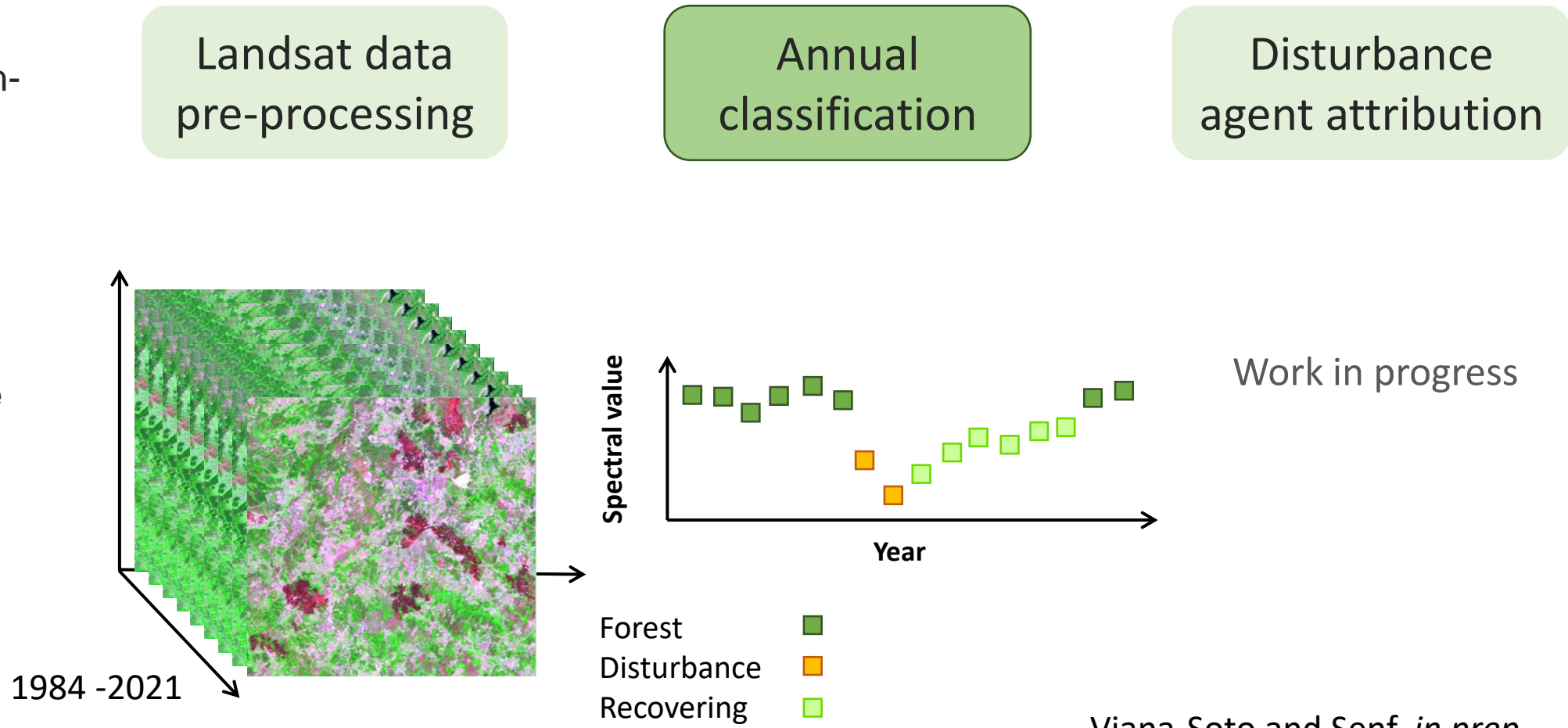
Maps and data are available to **LULUCF experts** under open access and **training** and guidance is provided.



- Open access **next generation pan-European forest maps** for disturbance and forest composition and structure
- Guidance to the use of forest **disturbance, composition, and structure** maps

Next generation European forest disturbance maps

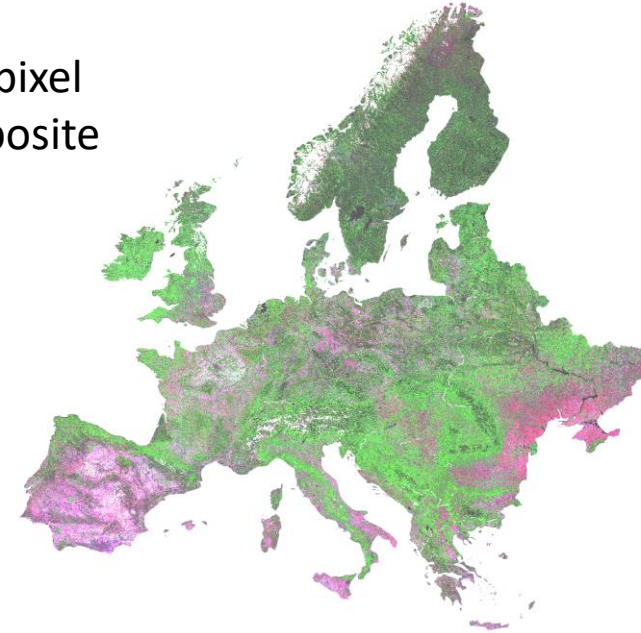
- **Extending the time frame** of existing pan-European forest disturbance assessments
- Allow for the detection of **multiple disturbance events** per time series
- Improve the **causal agent attribution**



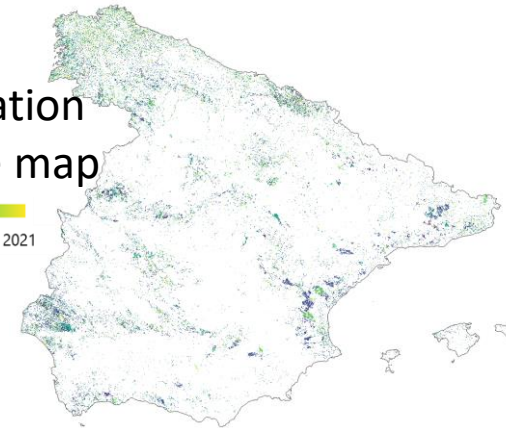
Next generation European forest disturbance maps

- Developed **European Data Cube** of Landsat data: annual seamless, gap free composites
- Implemented approach enabled to detect **multiple disturbance events** per time series
- Agent attribution results coming soon!

Best pixel composite



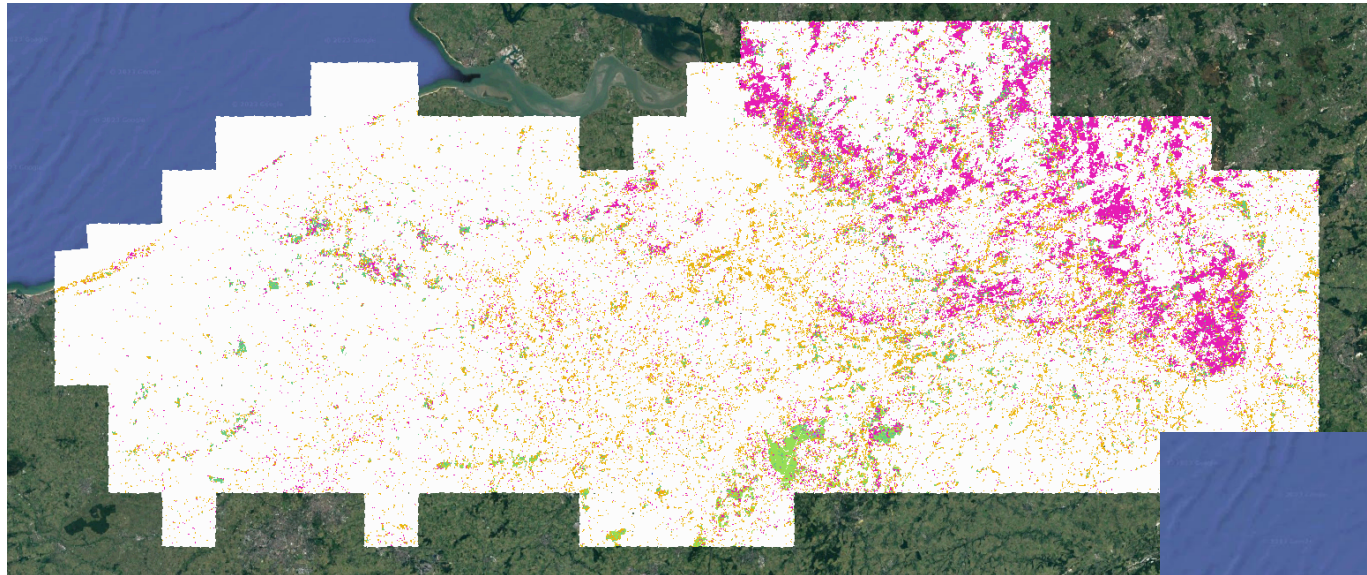
Next generation disturbance map



Viana-Soto and Senf, *in prep*

Forest structure and composition mapping

- Mapping forest structure and composition using GEDI and NFI data



Dominant tree species

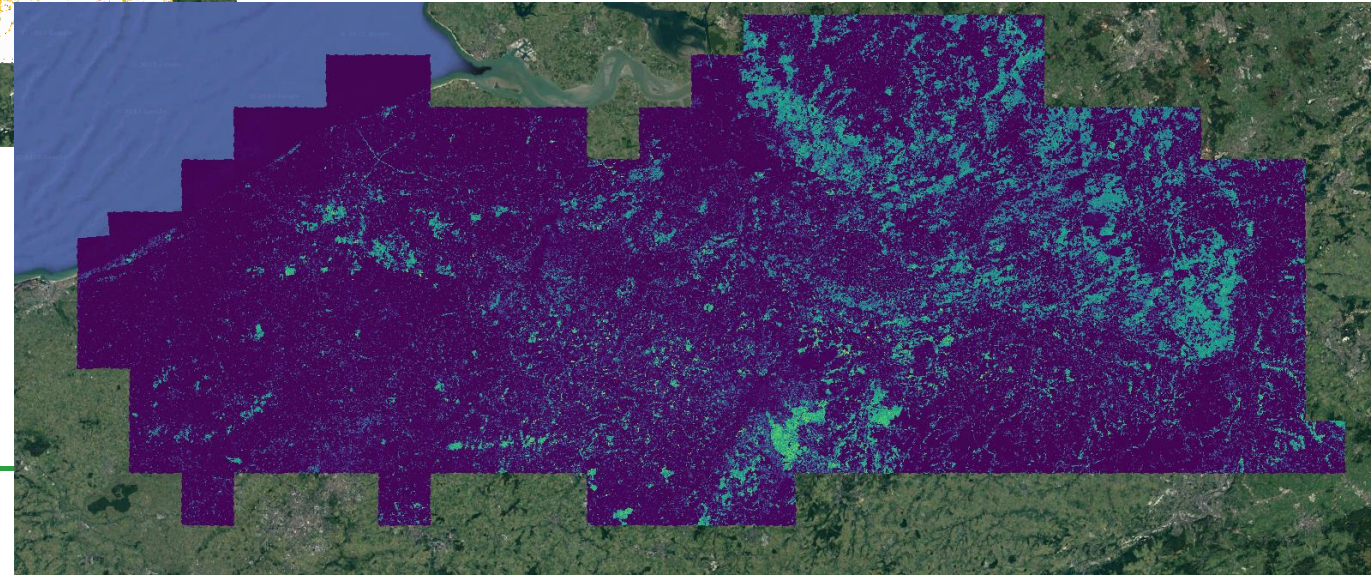
- spruce
- larch
- pine
- beech
- oak
- other needleleaf
- other broadleaf
- no forest

Canopy height



Initial results for Flanders

De Keersmaecker & van de Kerchove, in prep



Next generation forest ecosystem and management models

Simulation results will be synthesised and made available on the **CANOPY policy support platform**, complemented by **training** and **workshops**.



- Forest management **maps**
- **Improved** simulation models for:
 - forest ecosystems and management: **EFISCEN-space, LPJ-GUESS**
 - owner behavior: **CRAFTY**
 - earth systems: **RCA-GUESS**
 - integrated assessments: **LandSyMM, IMAGE, EFI-GTM**

Improved data, tools and methods for the European forest-based sector



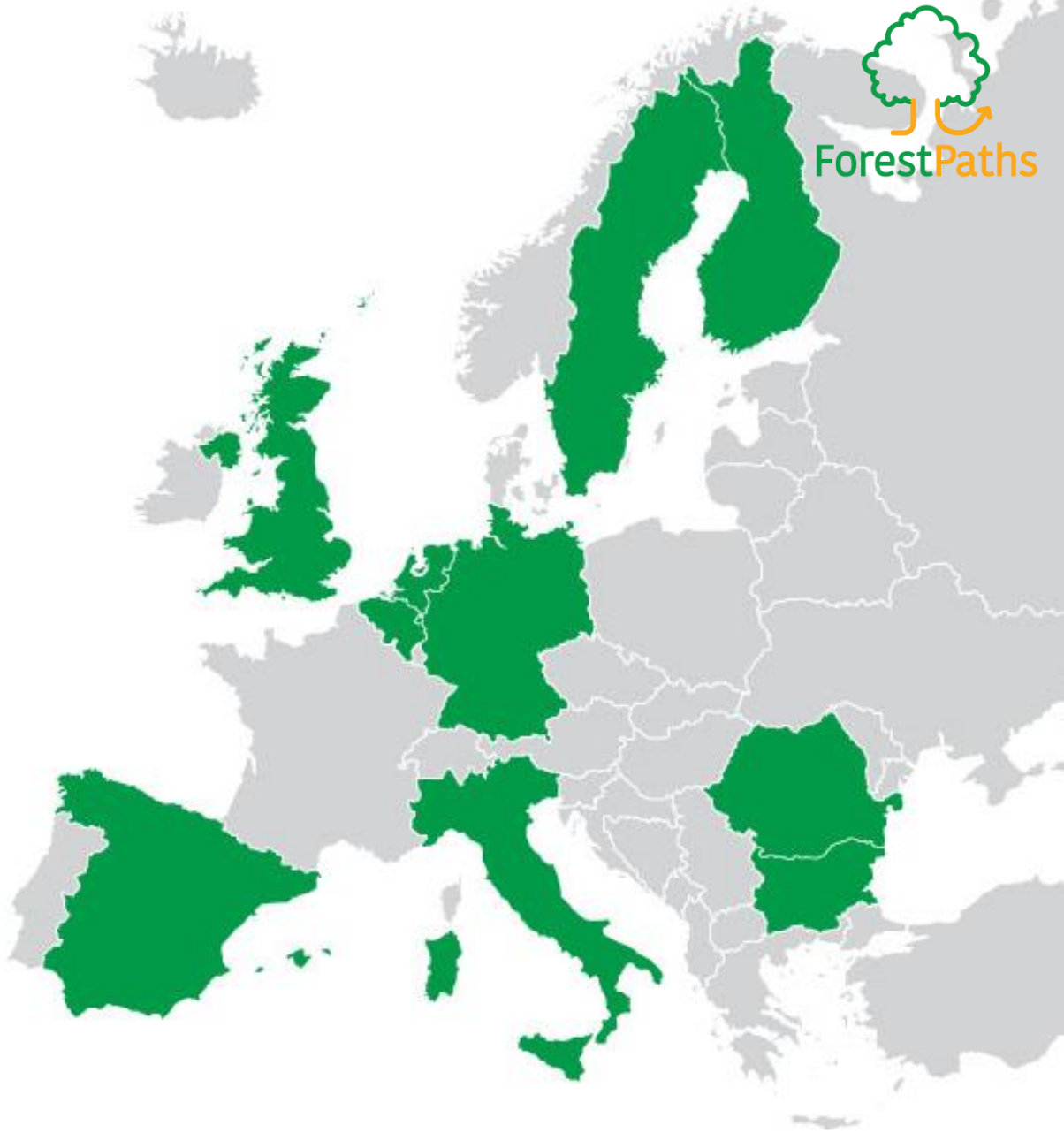
These are **freely available** and **training** is provided for them, along with other supporting materials such as **videos** and **podcast episodes**.

- Open access **LCA** data and tools
- Database of **substitution factors** and **impact factors**
- Methodologies for **upscaling** substitution impacts

The ForestPaths consortium



 EFI	 LUND UNIVERSITET	 TUM	 KIT Karlsruher Institut für Technologie
 Luke	 WAGENINGEN UNIVERSITY & RESEARCH	 vito	
	 cmcc Center for Climate Modelling and Data	 pi Prospect Institute	 Universitatea Transilvania din Braşov
 PENSOFT	 Joint Research Centre JRC	 THE UNIVERSITY OF EDINBURGH	 Teesside University





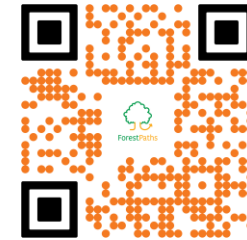
ForestPaths

Co-designing holistic forest-based policy pathways for climate change mitigation

 forestpaths.eu

 [@forestpaths_eu](https://twitter.com/forestpaths_eu)

 [ForestPaths Project](#)



ForestPaths
Newsletter

Thank you!

Hans Verkerk

hans.verkerk@efi.int