

Welcome to the LULUCF Workshop at the Joint Research Centre Ispra

Greet Janssens-Maenhout

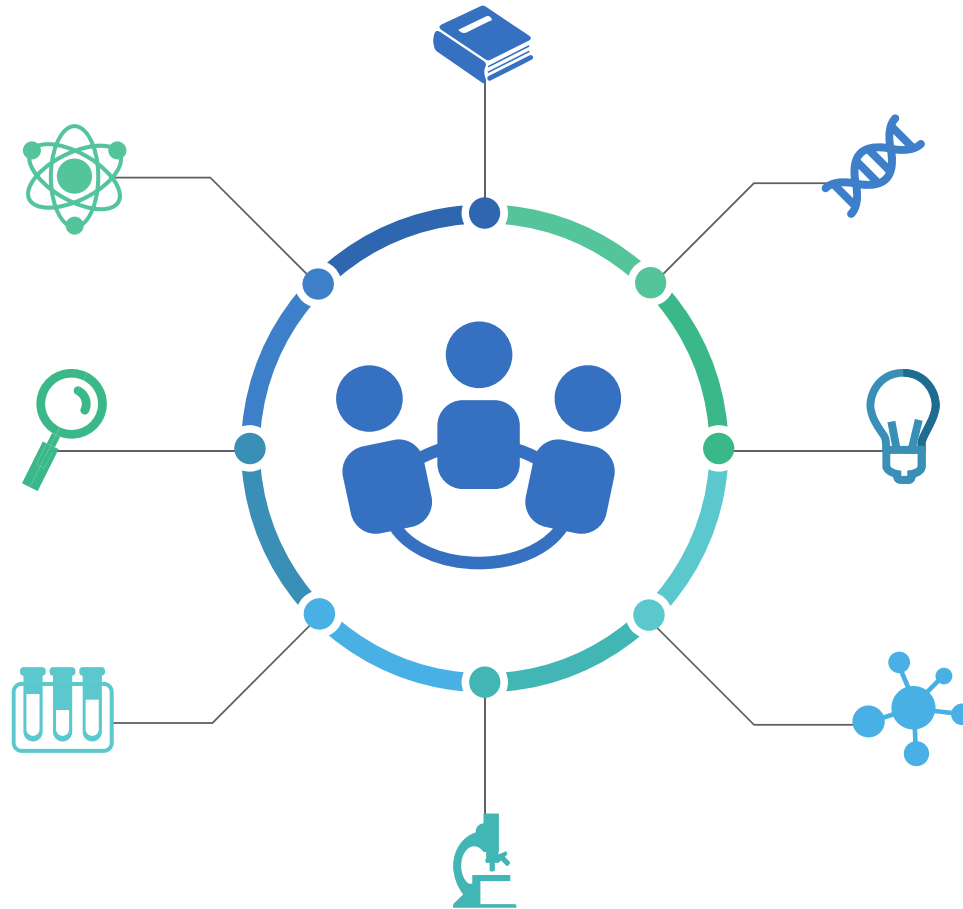
JRC sites

• Headquarters in **Brussels** and research facilities located in **5 Member States:**

- Belgium (Geel)
- Germany (Karlsruhe)
- Italy (Ispra)
- The Netherlands (Petten)
- Spain (Seville)



The need for evidence to inform policy



ANTICIPATE



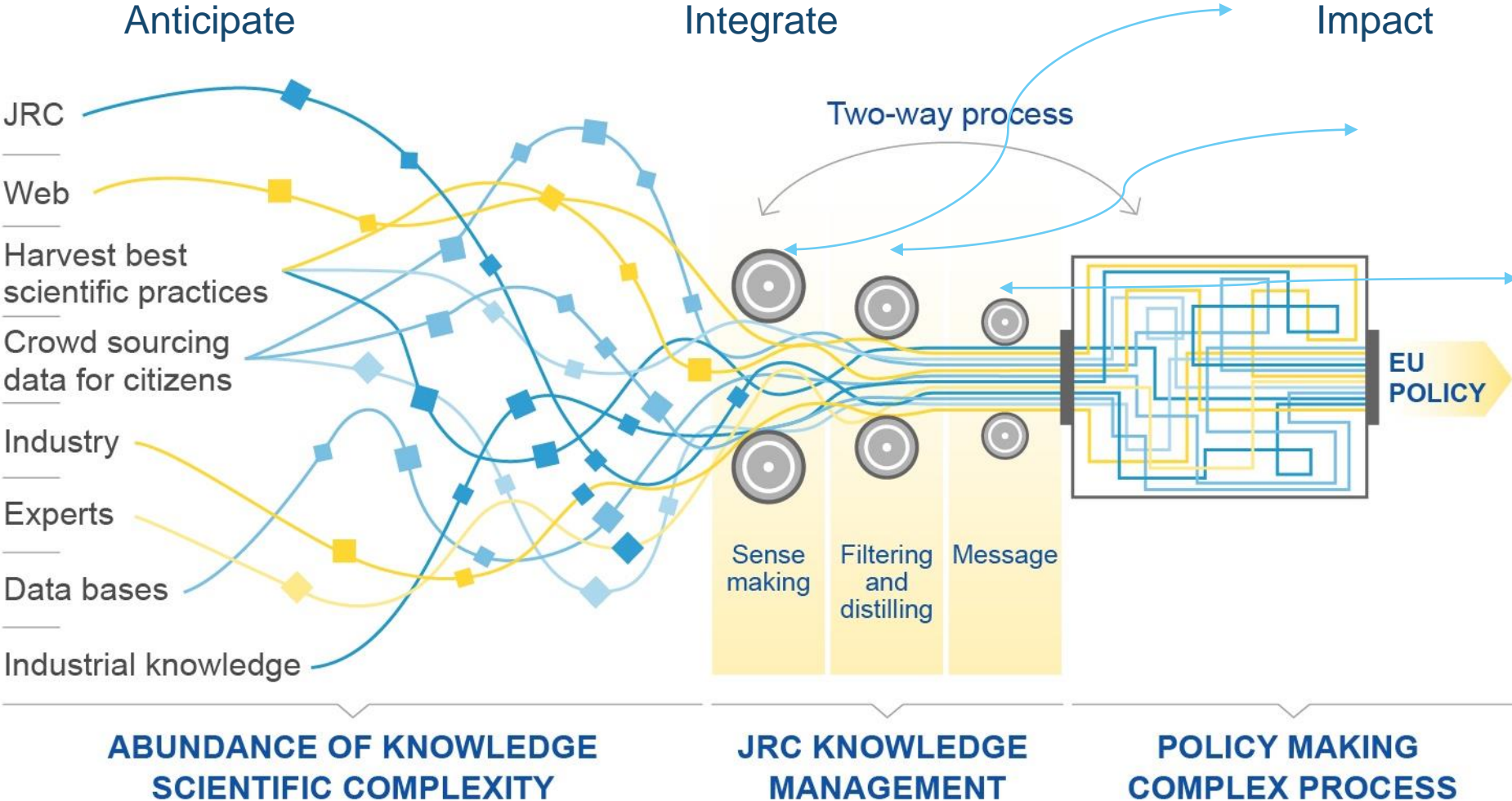
INTEGRATE



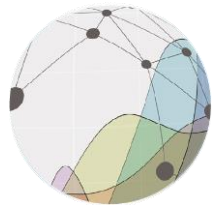
IMPACT



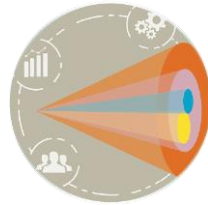
Dealing with the information overload



One-stop-shops for topics and tools



Text Mining and Analysis



Foresight

Competence Centres

for hands-on analytical tools



Composite Indicators and Scoreboards



Modelling



Microeconomic Evaluation



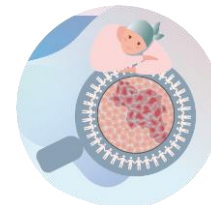
Behavioural Insights



Technology Transfer



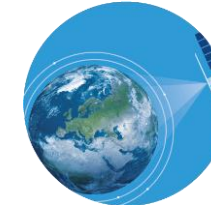
Participatory and Deliberative Democracy



Cancer



Biodiversity



Earth Observations



Disaster and Risk Management



Bioeconomy



Food and Nutrition Security



Migration and Demography



Territorial Policies



Food Fraud and Quality



Migration and Demography

Connecting aspects of the *Green Deal*



50%

of our scientific work programme is devoted to the **Green Deal**

Transport and clean energy

Geospatial systems to assess infrastructures and land available

Biodiversity and healthy ecosystems

Knowledge Centre on Biodiversity
Global deforestation observatory

Tracking our *Green Deal* targets



Under the **Farm to Fork** initiative, our work will provide:

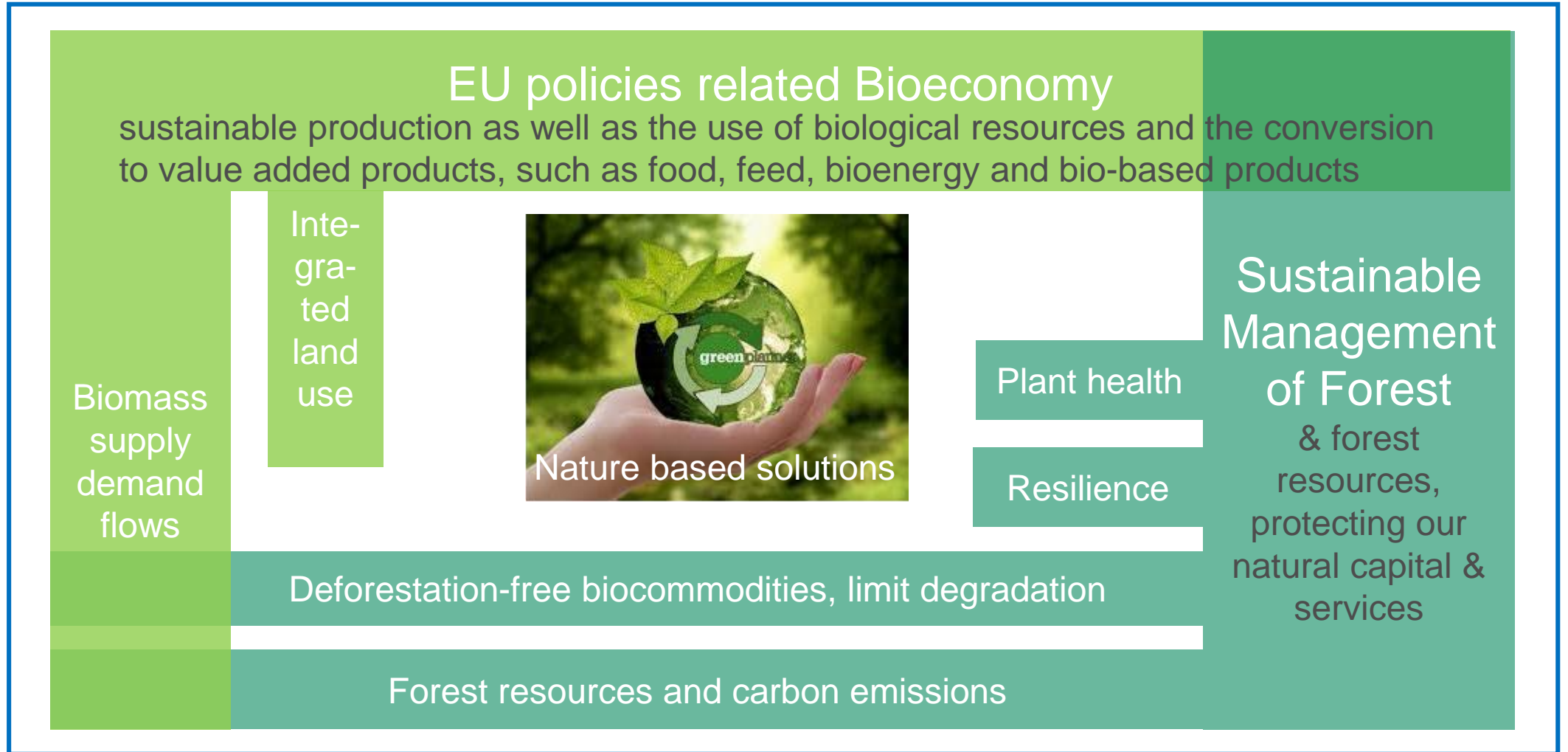
- analytical groundwork to assess the impact of regulations on **sustainable food systems**
- **environmental and climatic impact evaluation** of farming practices

50
farming practices

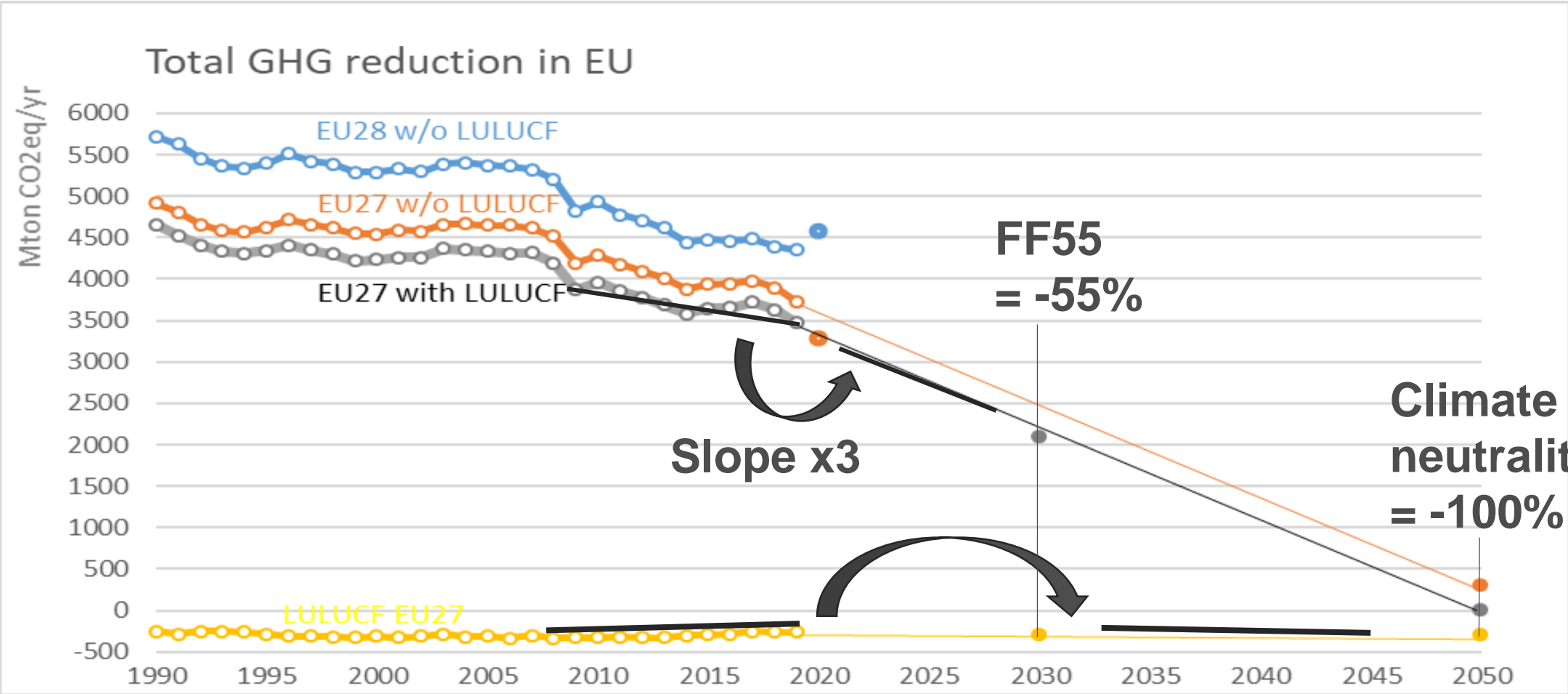
Mission of D1: scientific support to



monitoring



Climate Neutrality: A cross-cutting transition



The example of policy coherence



Proposed
Nature
Restoration Law

Revised
LULUCF

New CAP

Bioeconomy
Strategy



Proposal for Soil
Health Law

Zero Pollution

Legislative framework
proposal on forest monitoring
and strategic plans

Industrial
Strategy

Renewable
Energy Directive II

Thank you and keep in touch



© European Union 2023

Unless otherwise noted the reuse of this presentation is authorised under the [CC BY 4.0](https://creativecommons.org/licenses/by/4.0/) license. For any use or reproduction of elements that are not owned by the EU, permission may need to be sought directly from the respective right holders.

Slide 2: © Jukan Tateisi – unsplash.com





Slide 21: 3rd circle ©artyway – stock.adobe.com

Slide 27: from left to right ©nextbike – unsplash.com; ©TimSiegert-batcam and ©Grigory Bruev – stock.adobe.com

Slide 30: ©Okea – stock.adobe.com

EU Science Hub

joint-research-centre.ec.europa.eu

-  @EU_ScienceHub
-  EU Science Hub – Joint Research Centre
-  EU Science, Research and Innovation
-  EU Science Hub
-  @eu_science