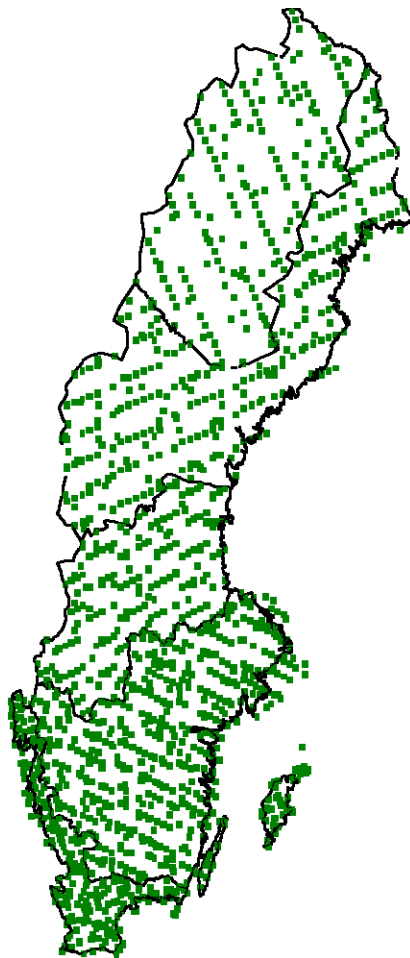




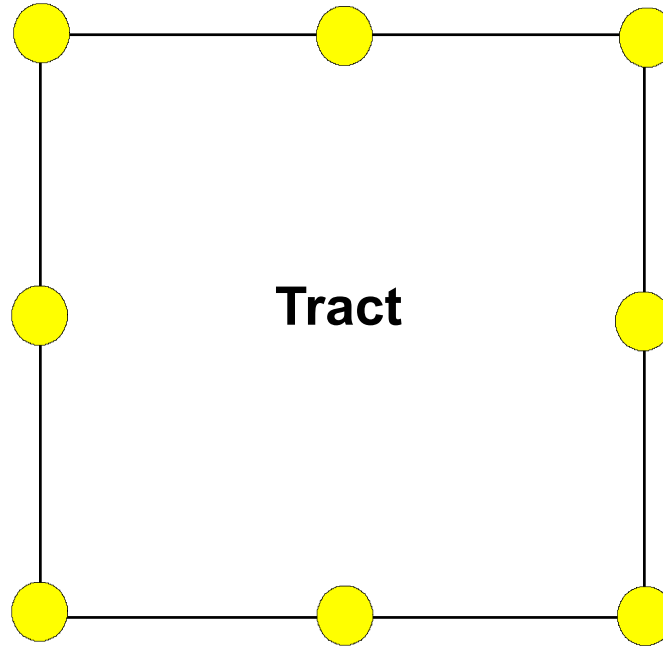
Land use and land use change are monitored using area based sampling



500 m

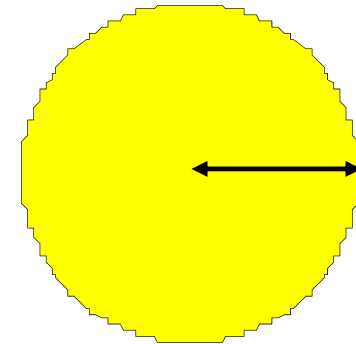


200 m



Tract

Sample plot
radius 10 m



Riksskogstaxeringen
The Swedish National Forest Inventory



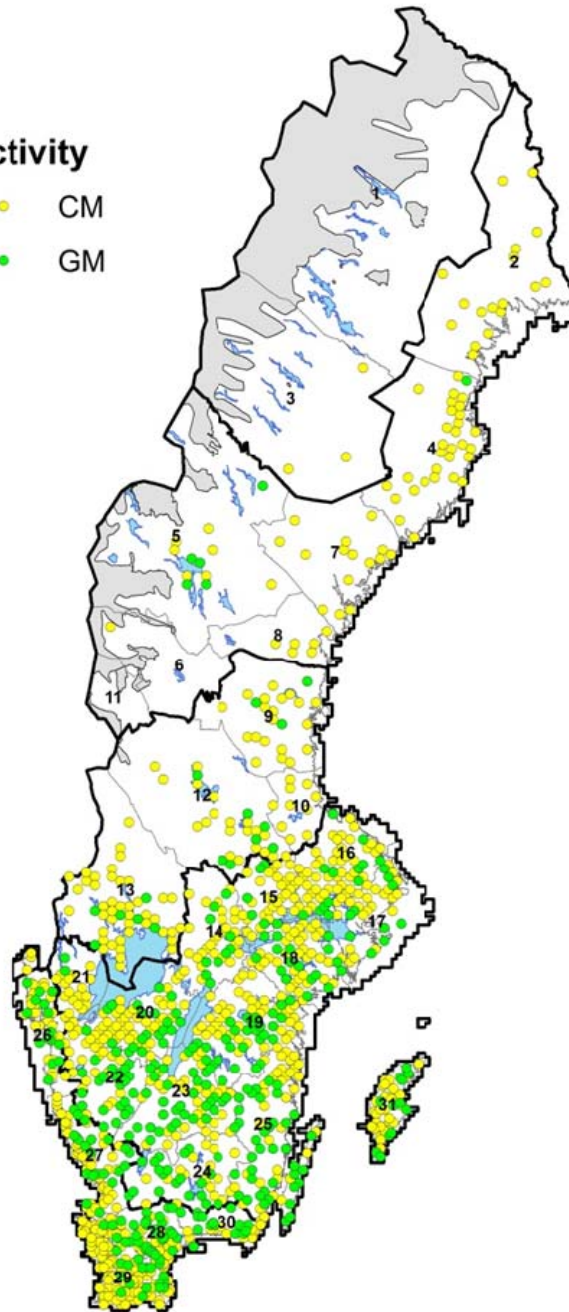


Consistency between KP-activities and Land Use
Precedence: D, AR, FM, CM, GM, other [kHa].

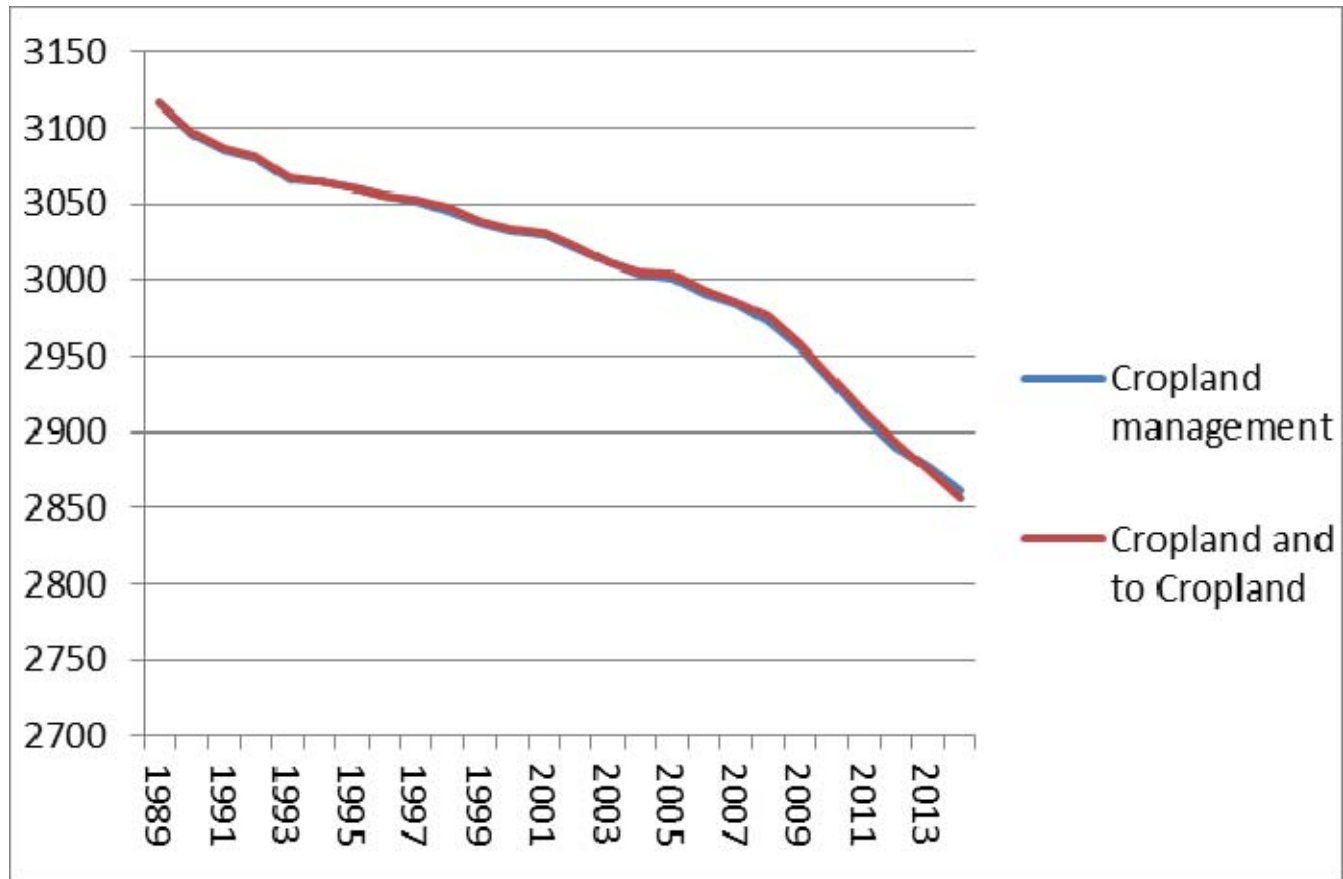
Sub 2016	D	AR	FM	CM	GM	Other	2009
D	217,108	0	0	0	0	0	217,108
AR	0,180	219,077	0	0	0	0	219,257
FM	16,132	0	28200,923	0	0	0	28217,055
CM	0	12,512	0	2930,358	6,251	4,924	2954,046
GM	0	10,570	0	2,069	435,570	0	448,209
Other	0	7,945	49,142	0	1,004	15382,360	15440,450
2010	233,420	250,104	28250,065	2932,428	442,825	15387,284	47496,126

Activity

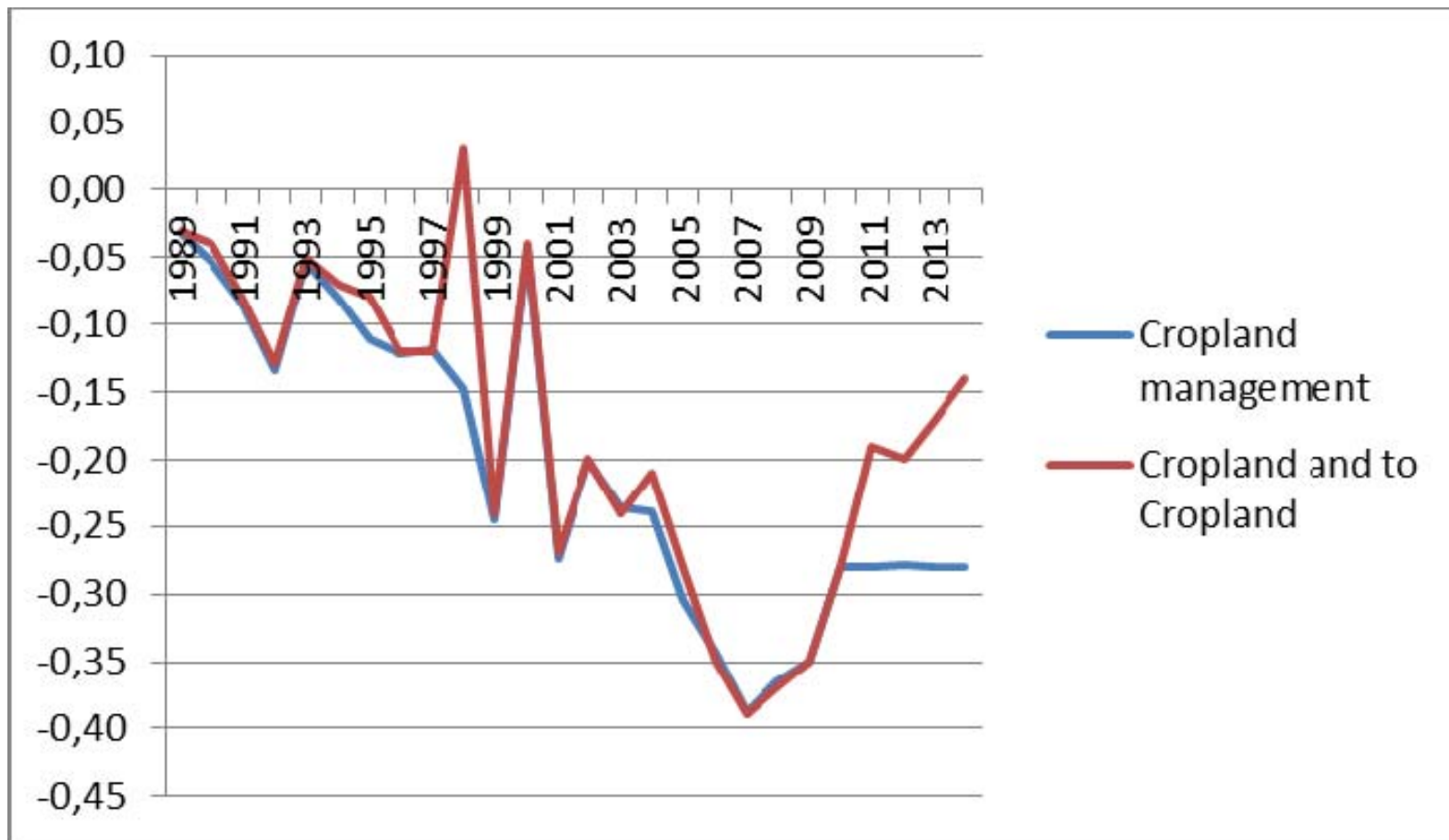
- CM
- GM



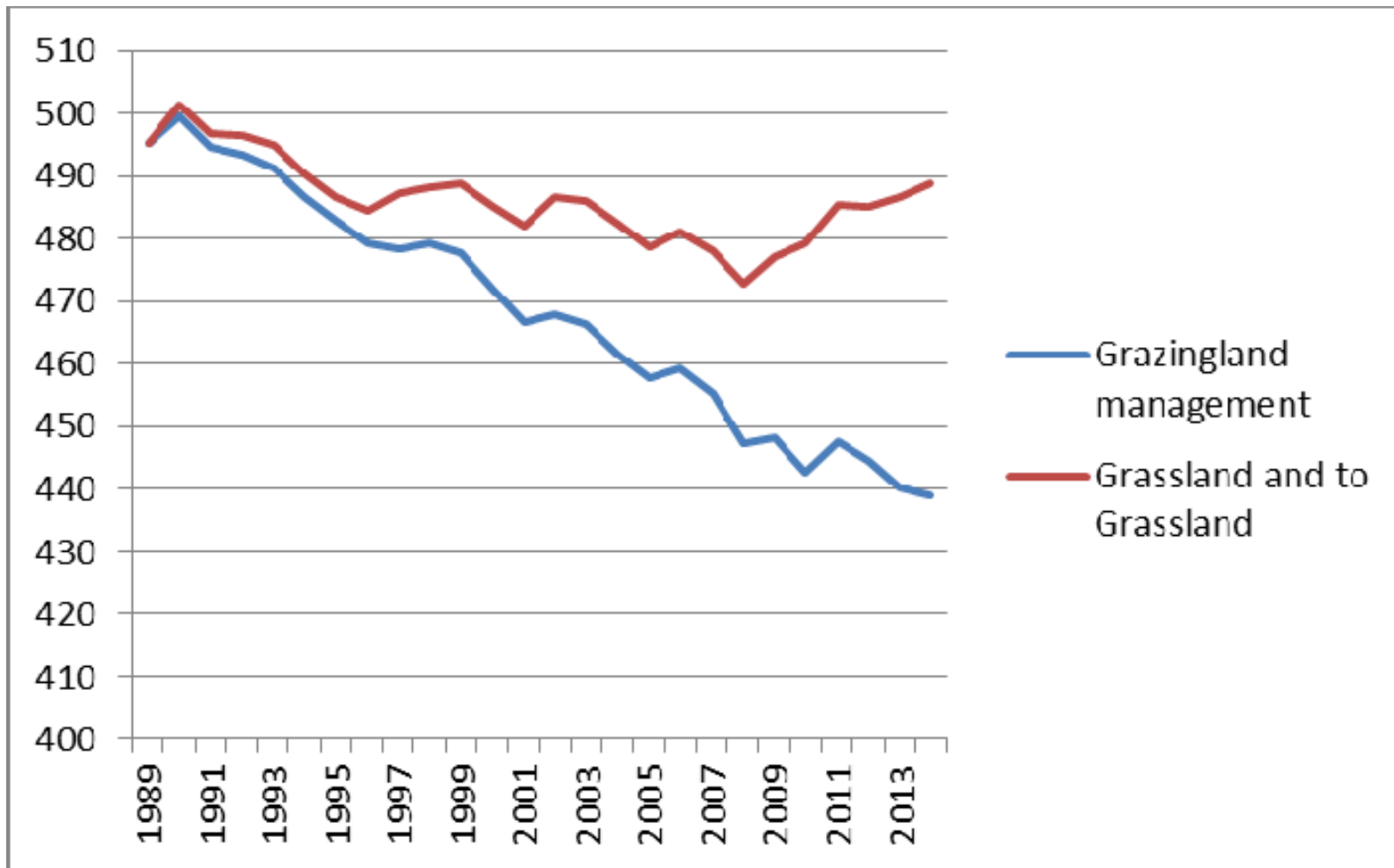
Areas [kHa]



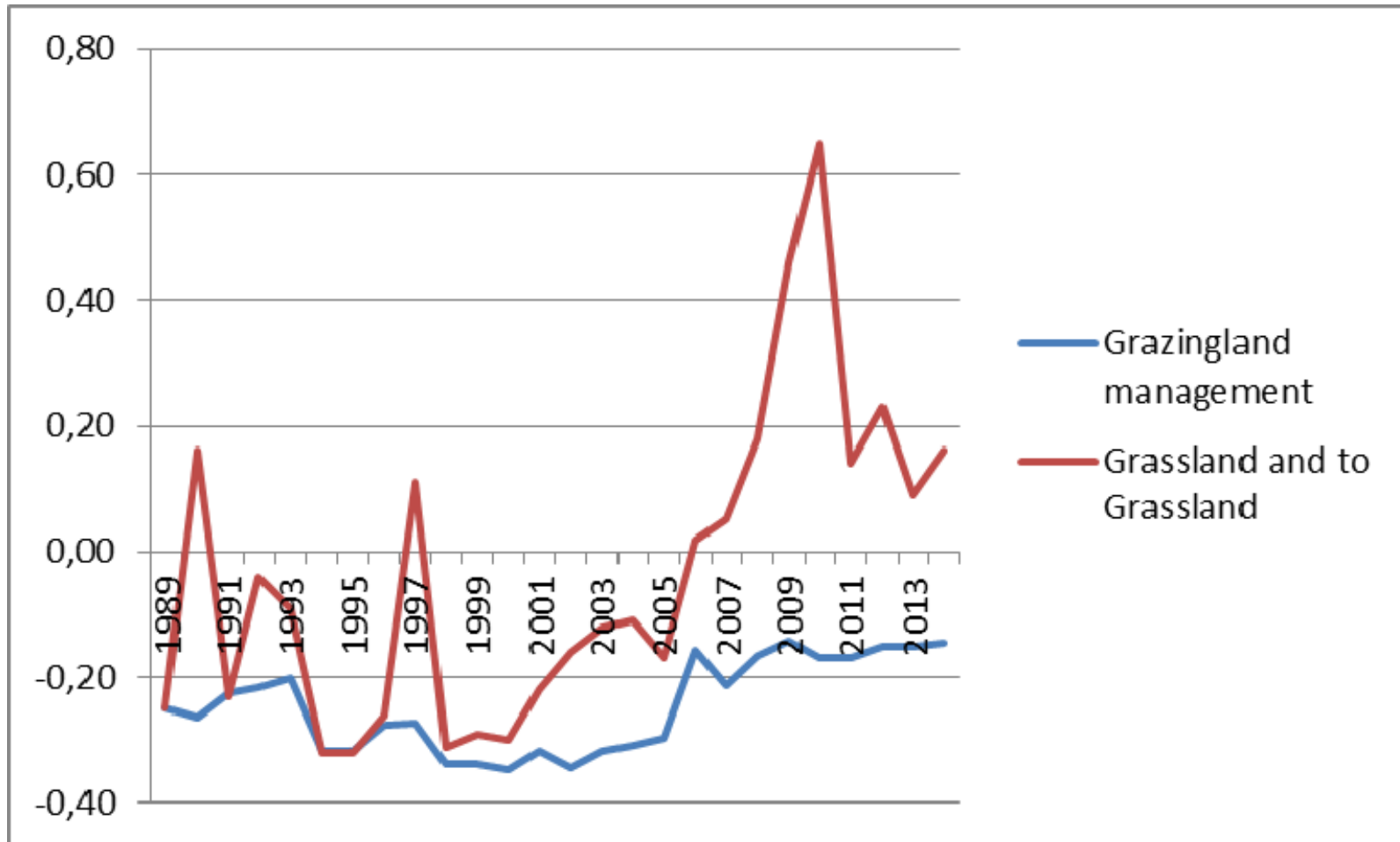
Net change in living biomass [MtonneCO₂]



Areas [kHa]



Net change in living biomass [MtonneCO₂]





Area [1000 ha]							
	Submission 2016						
	AR	De	FM	CM	GM	Other	Total
1989	0	0	28139	3117	495	16660	47496
1990	12	16	28130	3096	500	16658	47496
1991	22	31	28119	3085	495	16659	47496
1992	27	39	28113	3080	494	16658	47496
1993	42	56	28103	3066	491	16652	47496
1994	52	65	28100	3064	487	16643	47496
1995	61	75	28091	3060	483	16641	47496
1996	74	85	28081	3055	479	16637	47496
1997	81	98	28071	3052	479	16630	47496
1998	87	108	28067	3046	479	16625	47496
1999	102	120	28056	3038	478	16618	47496
2000	108	132	28050	3033	472	16617	47496
2001	117	141	28045	3029	467	16612	47496
2002	123	151	28038	3021	468	16610	47496
2003	135	159	28036	3011	466	16603	47496
2004	146	175	28042	3003	461	16585	47496
2005	155	177	28046	3001	458	16575	47496
2006	164	181	28091	2990	459	16525	47496
2007	182	193	28124	2984	455	16473	47496
2008	199	204	28173	2973	447	16415	47496
2009	219	217	28217	2954	448	16355	47496
2010	250	233	28250	2932	443	16305	47499
2011	272	246	28286	2909	448	16244	47490
2012	294	261	28318	2890	445	16190	47484
2013	316	270	28356	2877	440	16132	47477
2014	336	284	28393	2861	439	16077	47476