

LPIS and agricultural land use records

Arona, November 6, 2013

Wim DEVOS

www.jrc.ec.europa.eu



*Serving society
Stimulating innovation
Supporting legislation*

Joint
Research
Centre

The CAP year 2012

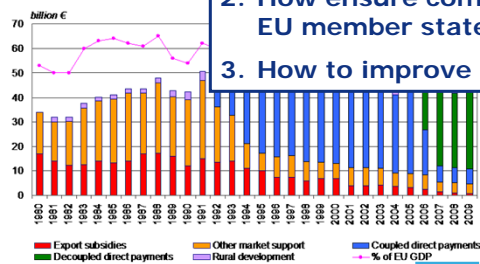
(Common Agricultural Policy)

From an EU perspective...

Administration

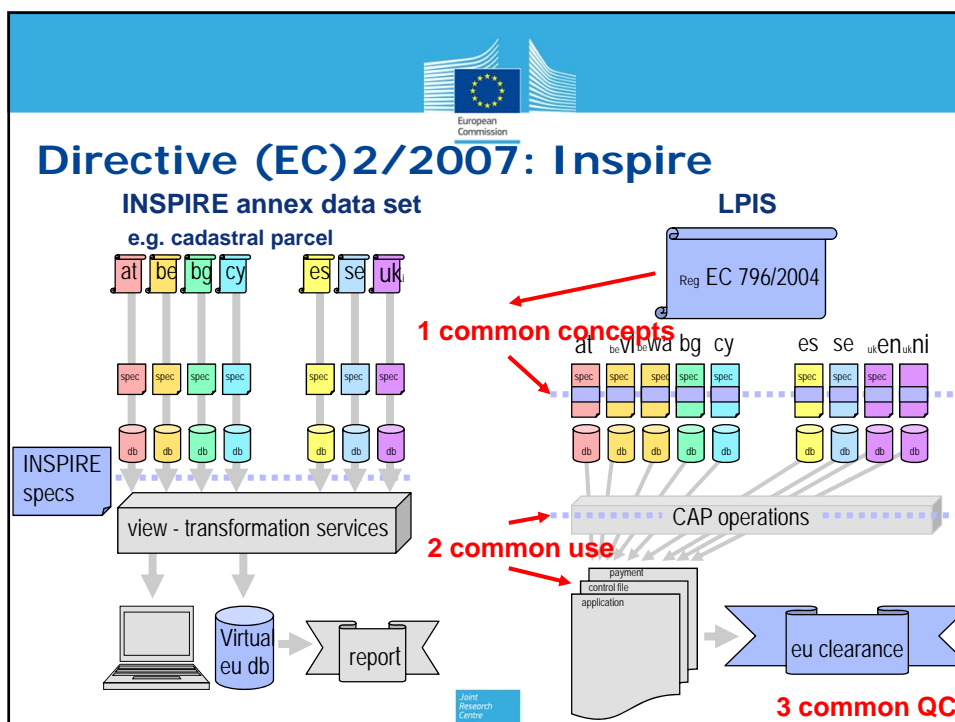
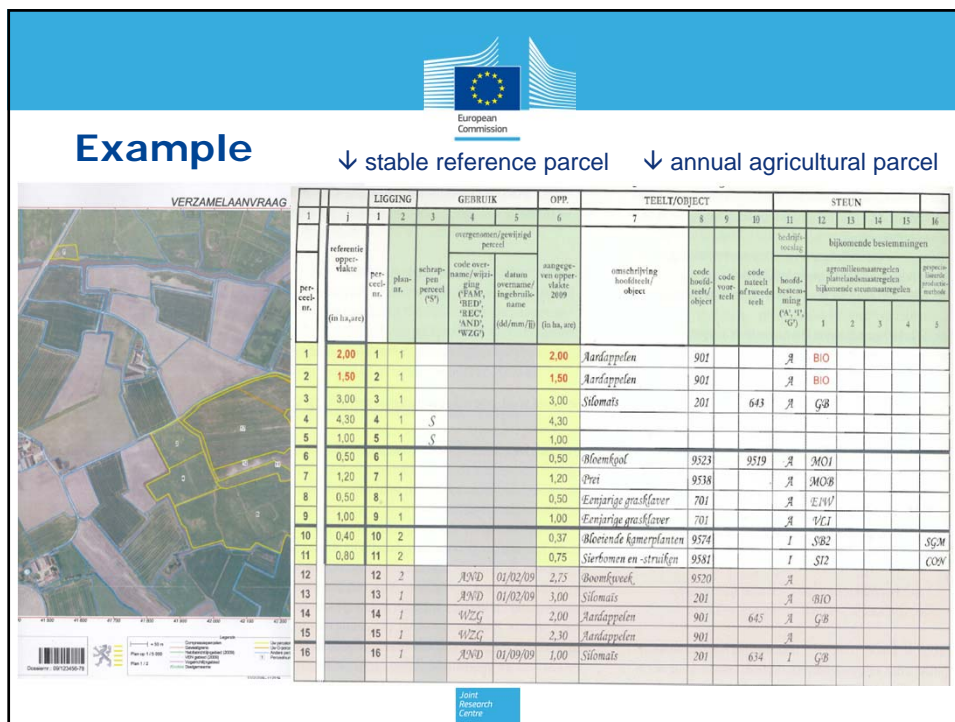


Over the years....

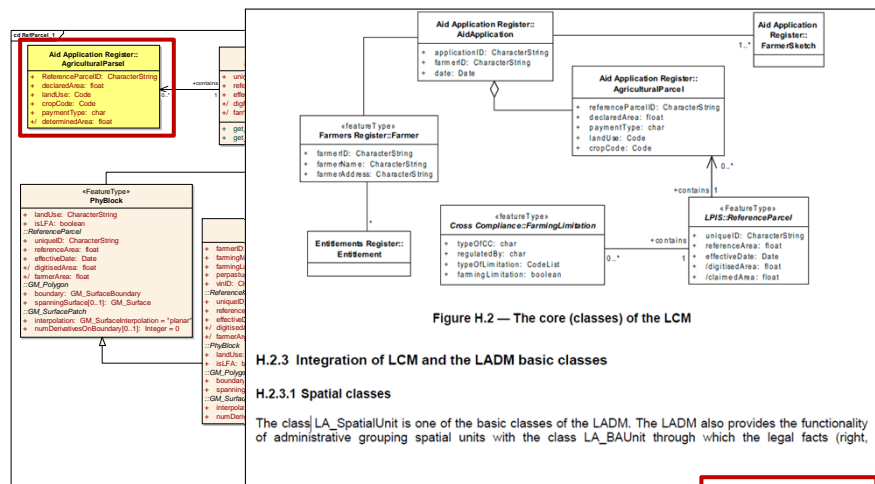


1. What kind of measurable area?
2. How ensure commonality over 27 EU member states?
3. How to improve accountability?

40 bn €/year is area based aid!



The LCM: a common LPIS interface

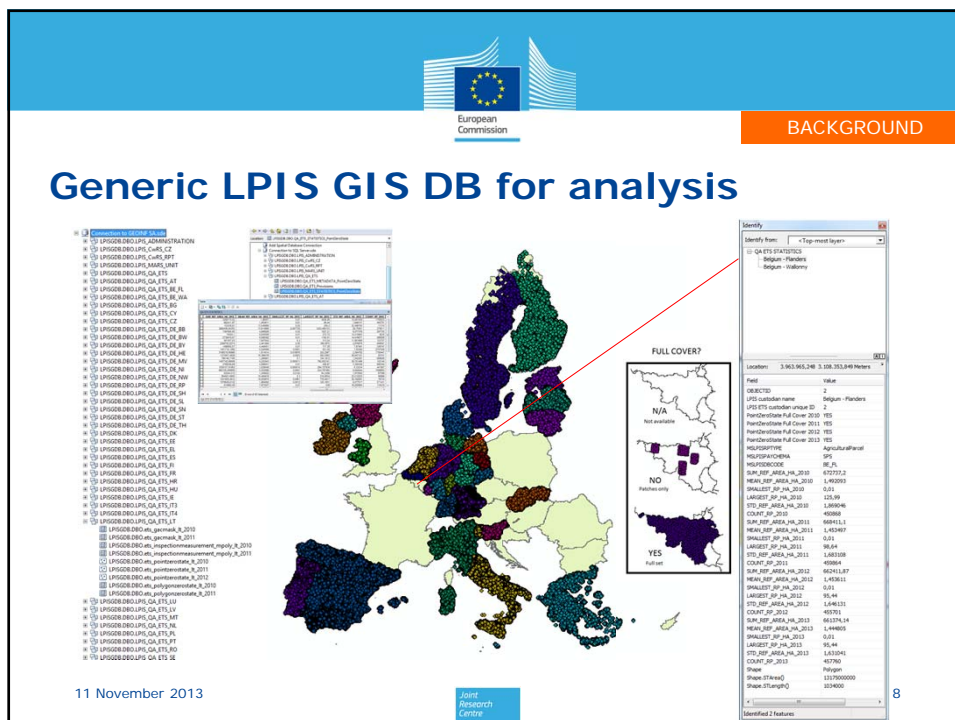
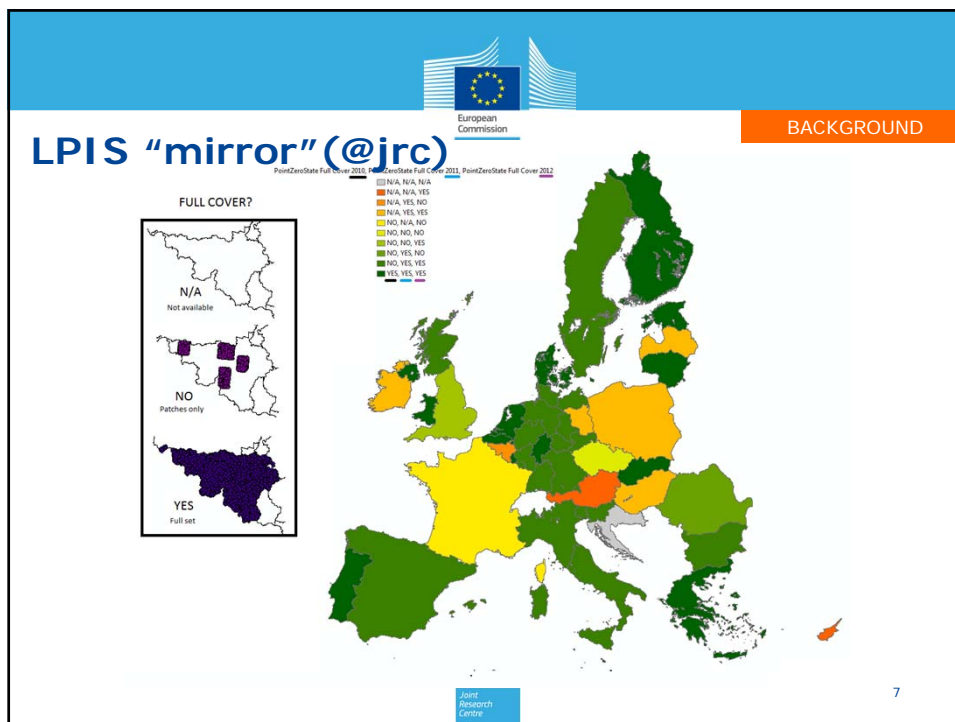


94

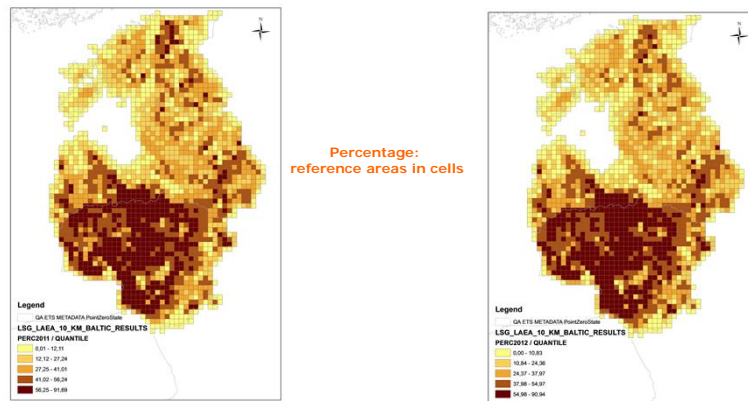
© ISO 2012 – All rights reserved

Practical implications

- Positions of agricultural parcels (crops) known (in national CRS)
- Location of agricultural land cover known (nominally @0,1ha)
- Annual declaration and control processes (nominally @0,01ha)
- GIS-based since 2004
- Many interoperability and exchange issues addressed since 2010



2011-2012 - Baltics



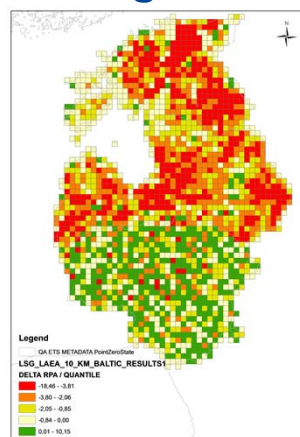
11 November 2013

Joint
Research
Centre

9

2011-2012 – change in the Baltics

Increase / decrease 2011-2012
Percentage:
reference area in cells

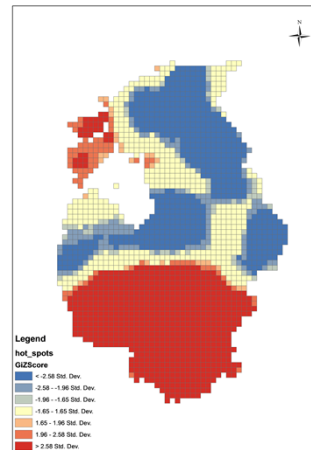
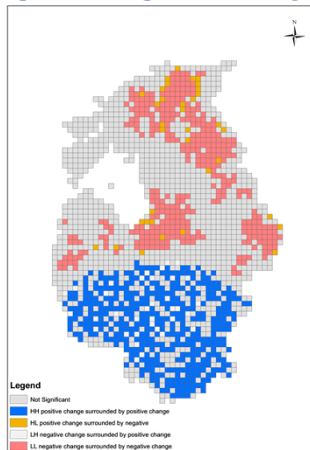


11 November 2013

Joint
Research
Centre

10

Geostatistics:
Cluster analysis
Hot-spot analysis

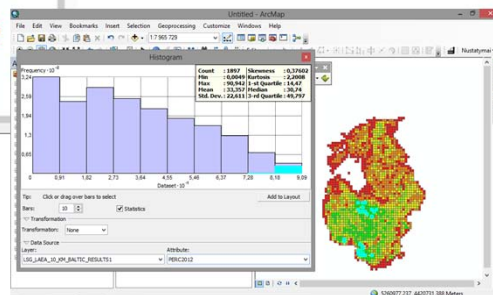
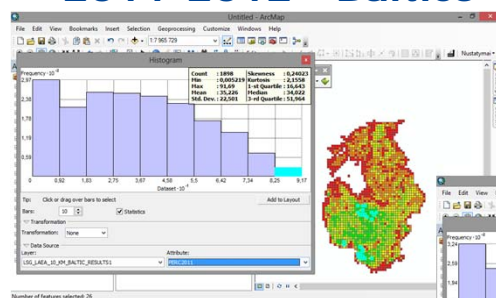


11 November 2013

Joint
Research
Centre

11

Geostatistics: Graphs



11 November 2013

Joint
Research
Centre

12

Research

Look for a way to mine the LC/LU data embedded in LPIS/IACS

1. by mapping LULUCF reporting requirements to LCM specifications and hence MS data
 - gap analysis
 - transformation options
 - cost-benefit analysis
2. while aiming at internal processing rather than data exports (respect confidentiality and sensitivity)
3. through testing in collaboration with 4 MS (one has already delivered data) – volunteers welcome 😊

Thank you!

