



Towards an Integrated European LULUCF Monitoring and Policy Pathway Assessment Framework



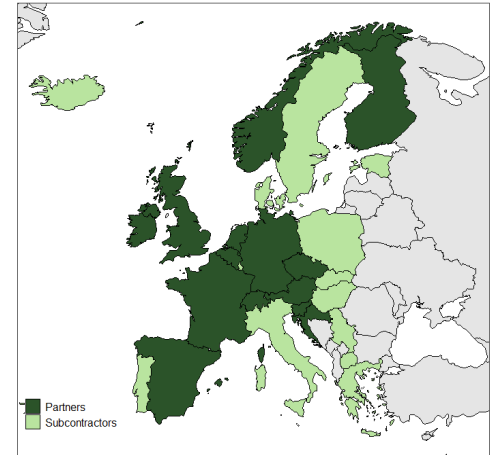
Johannes Breidenbach
NIBIO

 @EuPathFinder
@Jo_Breidenbach

<https://nibio.no/en/projects/pathfinder>

Project facts

- Start: September 2022
- Duration: 4 years
- Budget: 6.3 million EUR
- 23 Partners
- 17 supporting organizations (ICP Forests and NFIs)



NIBIO

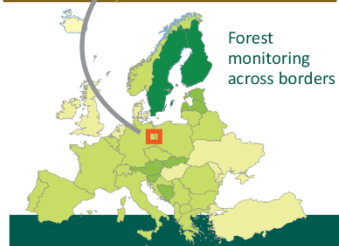
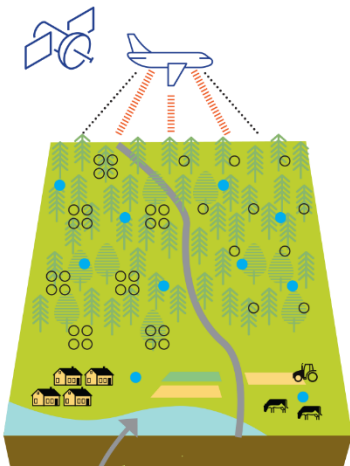
NORWEGIAN INSTITUTE OF
BIOECONOMY RESEARCH



An integrated forest monitoring and pathway assessment system for the EU

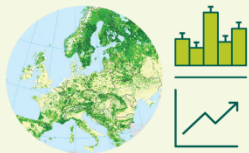
Forest monitoring

- NFI and ICP-Forests field plots
- Consistent plots

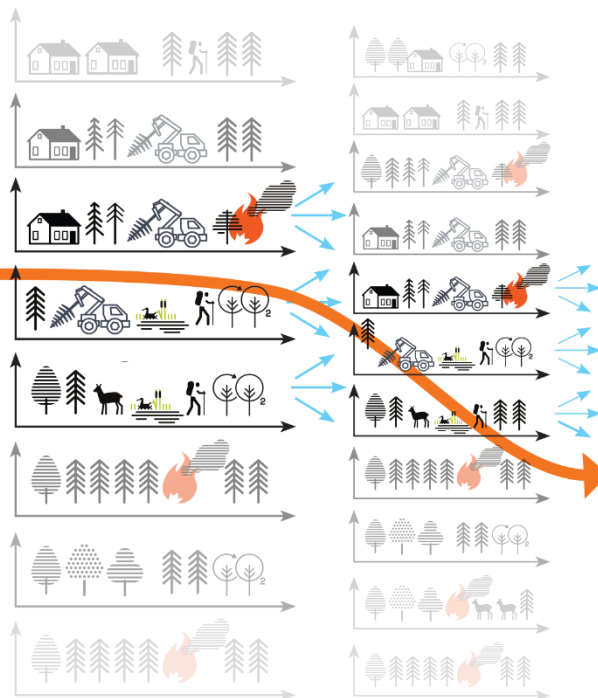


Maps and estimates

- Forest C stock change
- Biodiversity
- Bioeconomy



Future forest scenarios



Pathway assessment

Co-designed with stakeholders. Explores scenarios to identify required policies for forest management pathways that reach targets and consider trade-offs.



CLIMATE TARGETS

2030

2050

2100



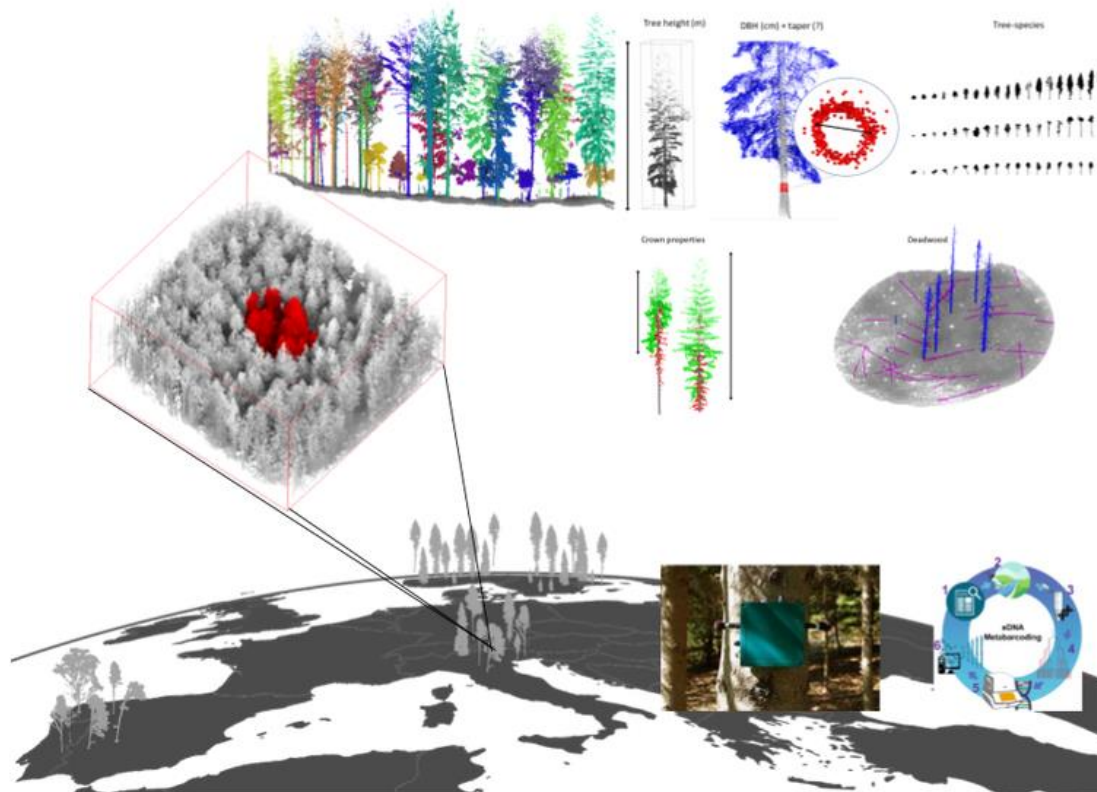
NIBIO

NORWEGIAN INSTITUTE OF BIOECONOMY RESEARCH



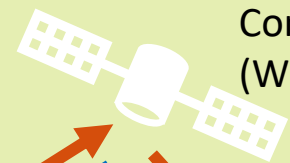
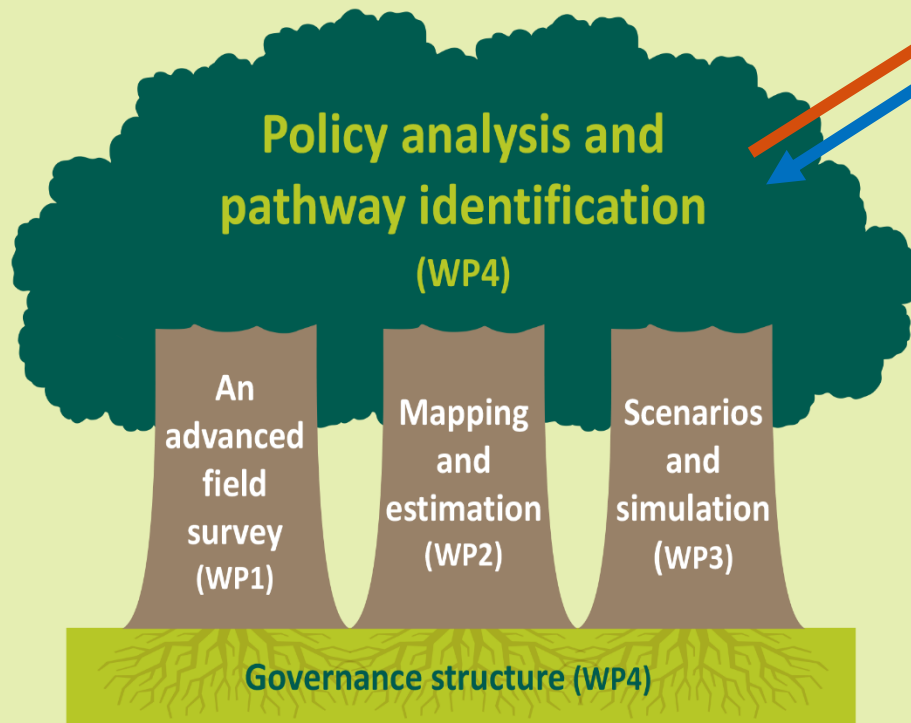
Field Protocol T1.2

Stefano Puliti, Christoph Klein, Lutz Fehrmann, Iciar Alberdi, Daniel Moreno Fernandez

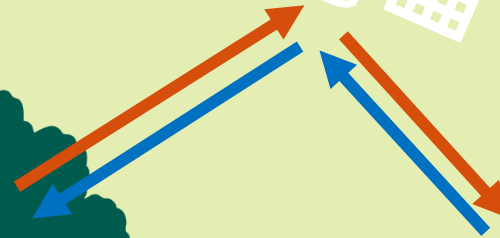




Project Management (WP6)



Communication (WP5)



Stakeholders



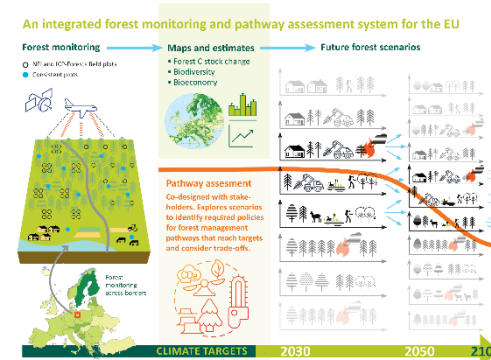
FOREST INFORMATION SYSTEM FOR EUROPE



...

Main impacts

- A European forest monitoring system...
- ... integrated with a pathway assessment system
- A consistent reporting system for Europe's LULUCF sector
- Pathways: how different forest management strategies contribute towards climate, biodiversity and economic targets



NIBIO

NORWEGIAN INSTITUTE OF
BIOECONOMY RESEARCH





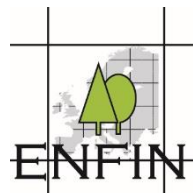
PathFinder

NEWS **CLICK ON THIS BANNER TO SIGN-UP TO OUR NEWSLETTER!**

1. Innovative forest monitoring & pathway assessment system for EU GHG reporting of LULUCF
2. Advanced pathway assessments
3. Policy implementation

This project has received funding from the European Union's Horizon 2020 research and innovation programme under grant agreement/101019927.

partners



UNIVERSITY OF HELSINKI



NIBIO

NORWEGIAN INSTITUTE OF BIOECONOMY RESEARCH



RESEARCH INSTITUTE NATURE AND FOREST

