

# Towards a European Forest Monitoring System



Johannes Breidenbach



@EuPathFinder  
@Jo\_Breidenbach

<https://pathfinder-heu.eu/>



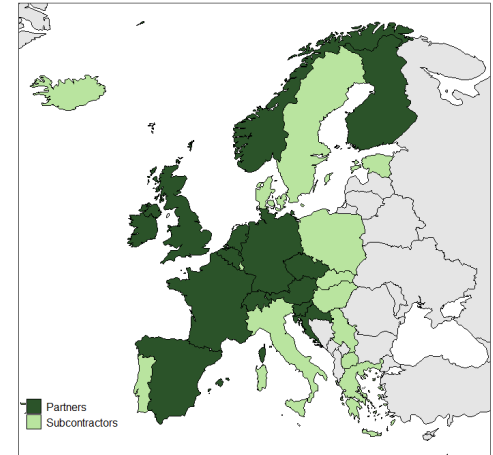
**NIBIO**

NORWEGIAN INSTITUTE OF  
BIOECONOMY RESEARCH

# Project facts

---

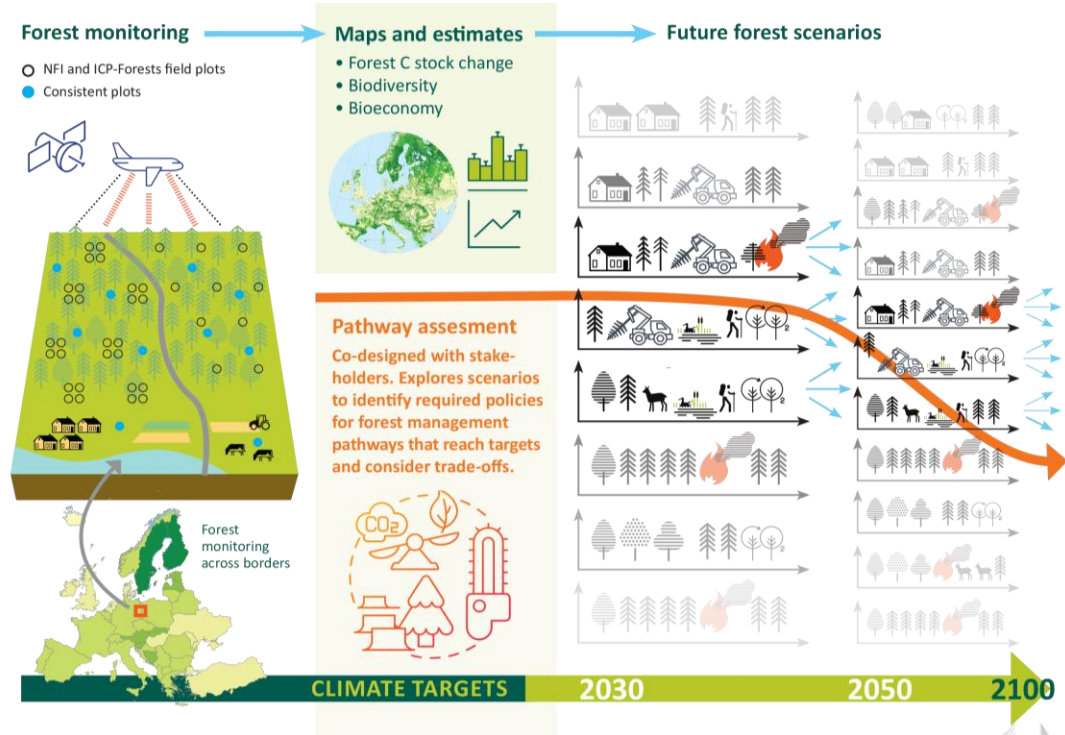
- Start: September 2022
- Duration: 4 years
- 23 Partners
- 17 supporting organizations (ICP Forests and NFIs)



# Aim: Prototype of an Integrated European Forest Monitoring System

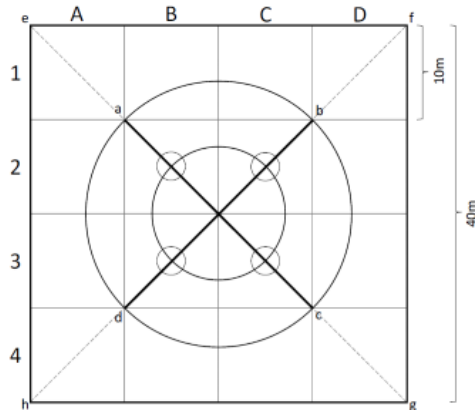
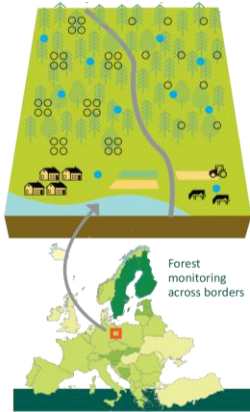
## Integration

- Field data, Rem. sens., modelling
- National information
- National expertise

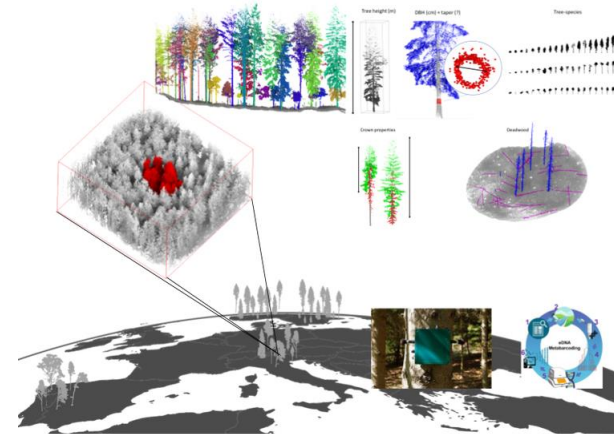


# Results - Advanced field-based monitoring

- Methods for structured collection and QC of NFI data
- Compiled > 1,3 million NFI plots with RS info from 14 countries
- Blueprint for standardized field plots to support existing systems
- Field protocol for using personal lidar as a measurement tool



PathFinder



**NIBIO**  
NORWEGIAN INSTITUTE OF  
BIOECONOMY RESEARCH

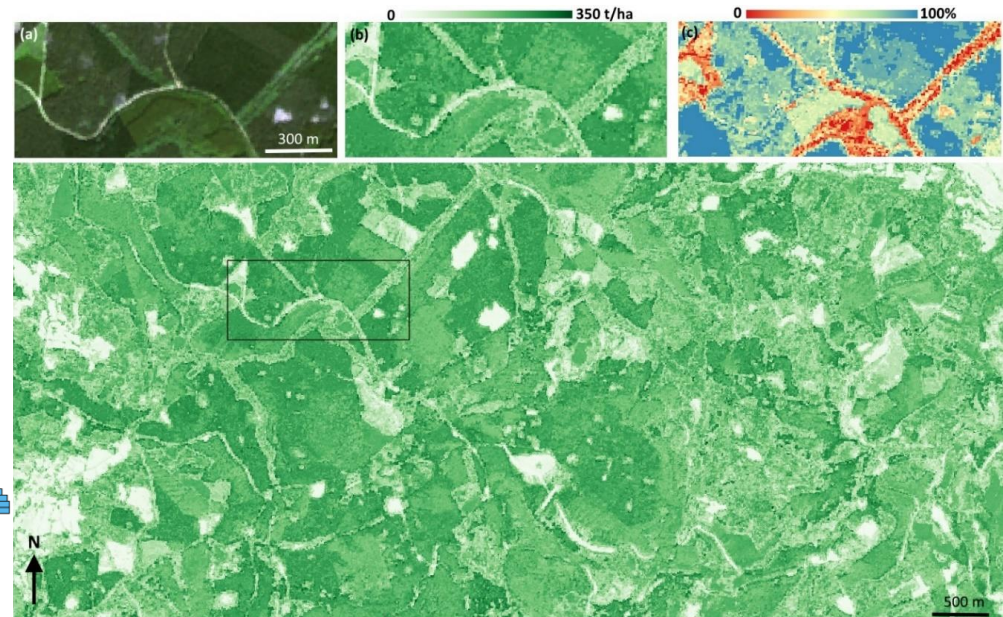
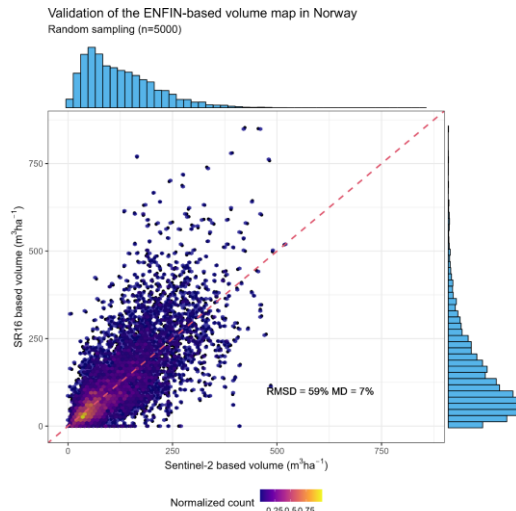
# Results – Mapping and estimation

## Maps and estimates

- Forest C stock change
- Biodiversity
- Bioeconomy



- Pan-European maps combining NFI and satellite data for 2021
  - Living Biomass (AGB)
  - Volume
  - Deciduous/coniferous proportion
- AGB loss in 2021



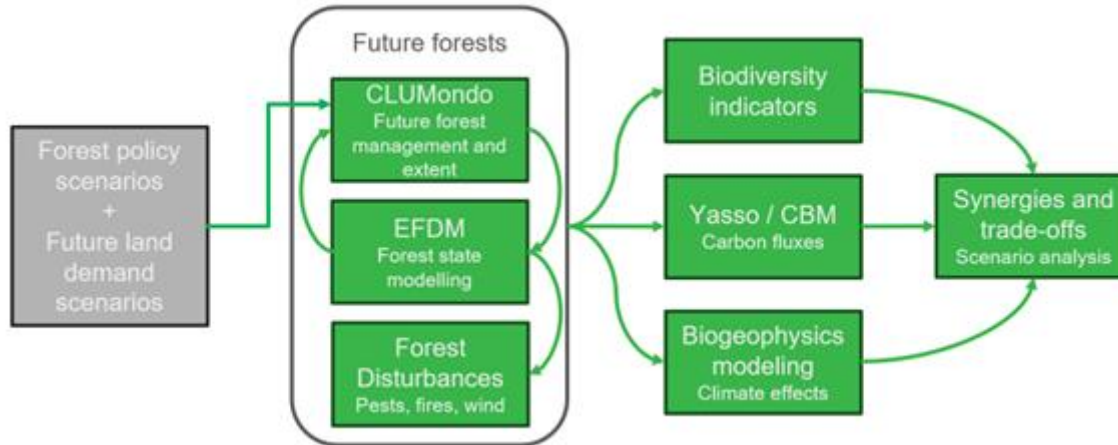
NIBIO

NORWEGIAN INSTITUTE OF  
BIOECONOMY RESEARCH

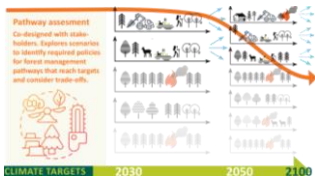
# Ongoing work – Forecasting



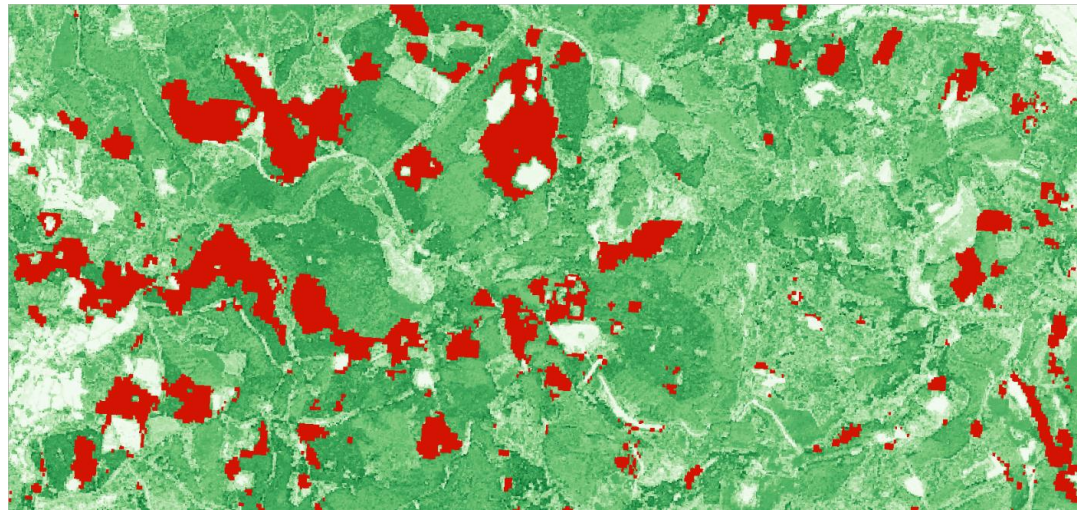
- Modelling framework and interactions



# Ongoing work – Pathway assessment



- A reporting and accounting framework for the LULUCF sector
  - Uni Bristol, JRC, NIBIO
  - First steps: comparison of AGB loss map with country NIRs
- Institutionalization of ENFIN – better European coordination





**NEWS** **CLICK ON THIS BANNER TO SIGN-UP TO OUR NEWSLETTER!**

1. Innovative forest monitoring & pathway assessment system for EU GHG reporting of LULUCF
2. Advanced pathway assessments
3. Policy implementation

This project has received funding from the European Union's Horizon Europe and Mobility Program under grant agreement/101019807

# partners



NORWEGIAN INSTITUTE OF BIOECONOMY RESEARCH



RESEARCH INSTITUTE NATURE AND FOREST

