



# Overview of LULUCF inventory at EU Level

JRC LULUCF workshop, 7 June 2021

***Giacomo Grassi***

***Raúl Abad Viñas***

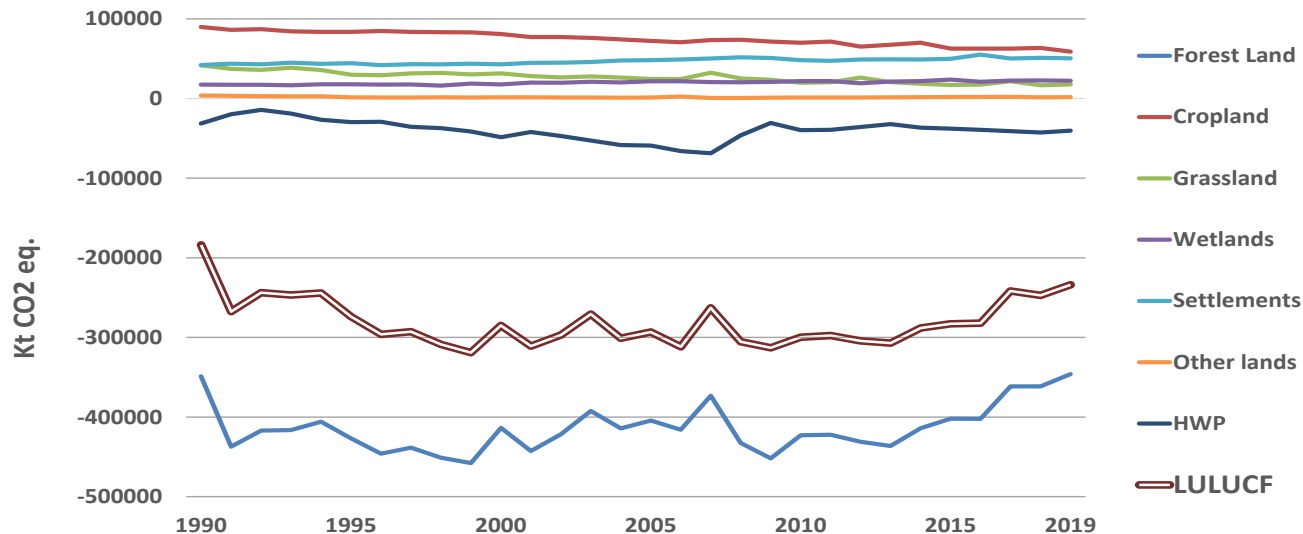
European Commission. Joint Research Centre

Raul.abad-vinas@ec.europa.eu

Giacomo.grassi.@ec.europa.eu

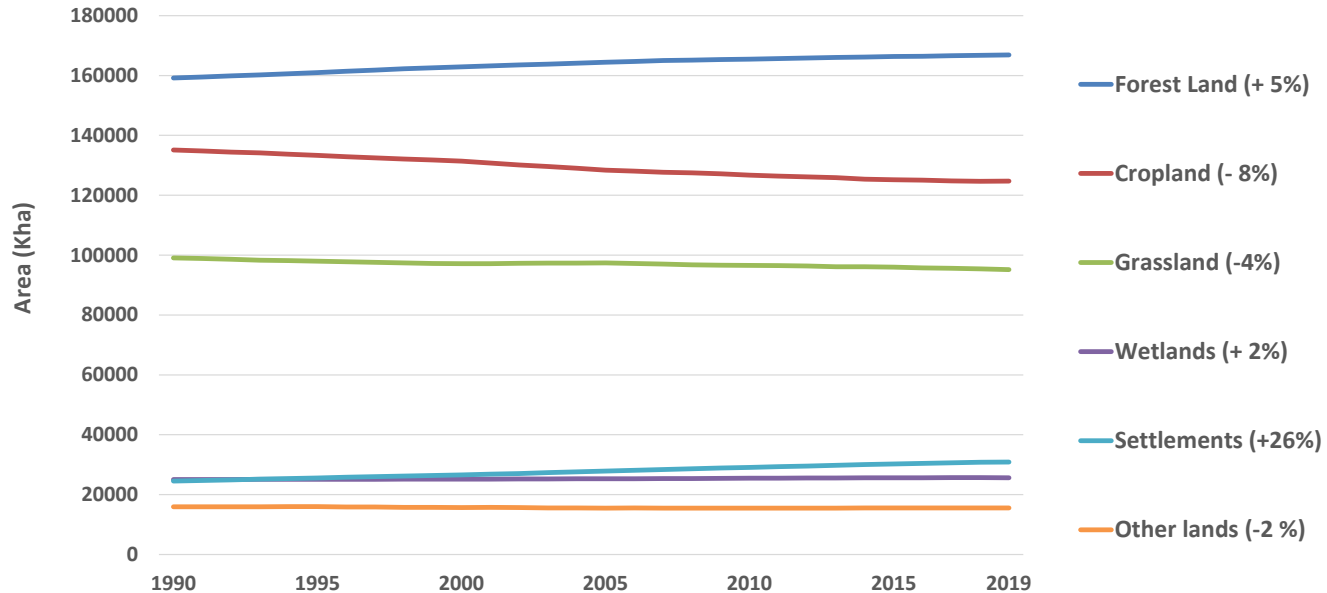
Joint  
Research  
Centre

# Emissions (+) and removals (-) trends: EU27+UK+Iceland



In 2019, the LULUCF sector was a net sink of -234 Mt CO<sub>2</sub>eq, (+ 5% compared to 1990).

# Land use area trends: EU27+UK+Iceland



The total area reported for all land use categories is ca. 459.000 kha

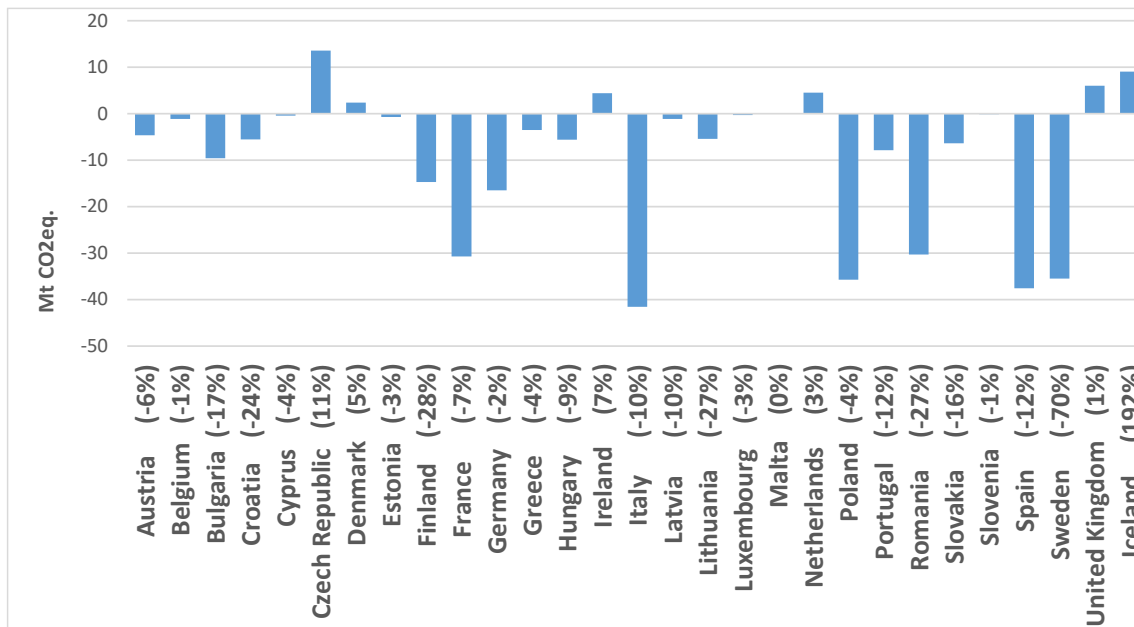
# Hotspots in the LULUCF sector

- **Land use changes** represent 9% of EU area but account for > 28% of total absolute emissions & removals.

In 2019, the sink from conversions to FL (-39 MtCO<sub>2</sub>/yr) and GL (-25 MtCO<sub>2</sub>/yr) is well compensated by emissions from conversions to CL (44 MtCO<sub>2</sub>/yr) and SL (46 MtCO<sub>2</sub>/yr).

- Area of **organic soils** (20 Mha) represents about 5% of EU area, but their emissions (107 MtCO<sub>2</sub>/y) account for 37% of net total LULUCF removals.
- **Emissions from Biomass burning** although with large inter-annual variability (2-15 MtCO<sub>2</sub>e/yr) in exceptional years reached 21 MtCO<sub>2</sub>e/yr-2017. It represents 9% of the total net sink in LULUCF.

# LULUCF and its contribution to entire GHGI (exc. LULUCF)



In 2019 for EU27+UK+ISL, LULUCF offsets 6% of total GHGs (Forest offsets 9%)

# Completeness of the EU LULUCF inventory

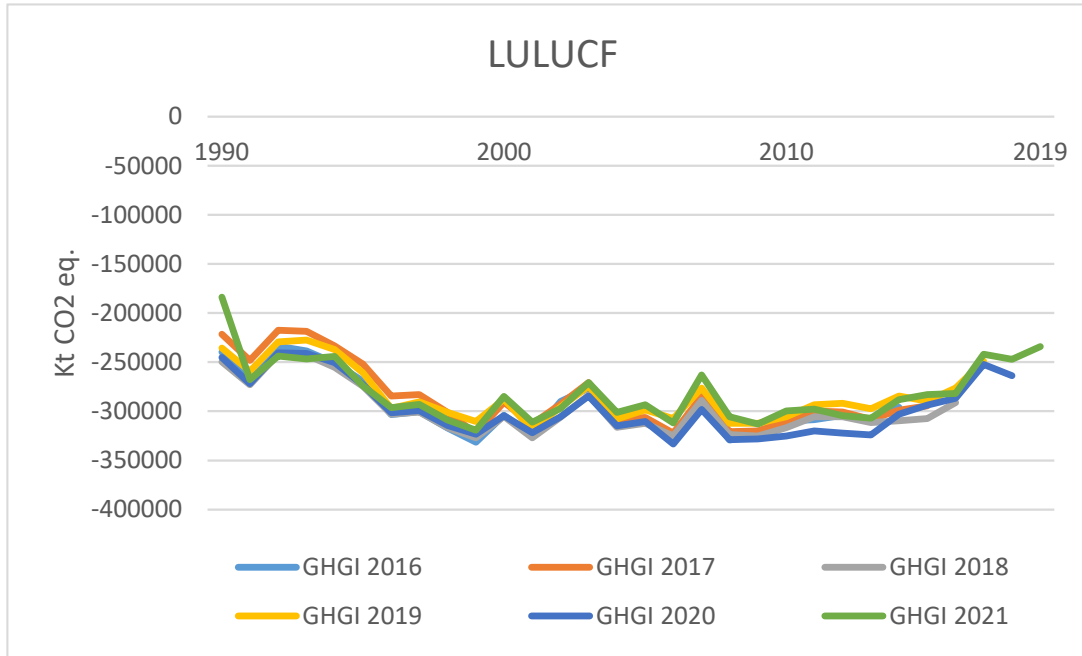
Land Use	Subcategory	Carbon Pool			
		Living biomass	Dead wood	Litter	SOC min
Forest land	FL-FL	97%	55%	24%	31%
	L-FL	97%	66%	69%	83%
Cropland	CL-CL	93%	14%		86%
	L-CL	76%	55%		86%
Grassland	GL-GL	59%	17%		59%
	L-GL	79%	62%		76%
Wetlands	WL-WL	21%	7%		10%
	L-WL	55%	41%		28%

Assumed in balance under T1 or no method available in the IPCC 2006

**Completeness: FL > CL > GL > WL**

**Completeness of conversions > land use remaining the same category**

# Recalculations of the EU LULUCF sector: 2016-2021

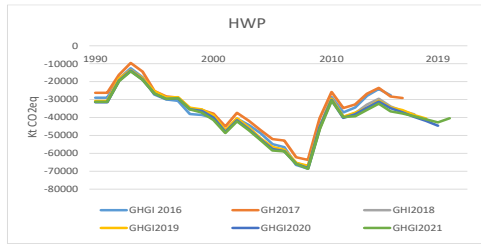
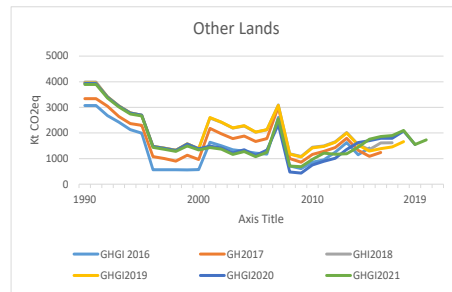
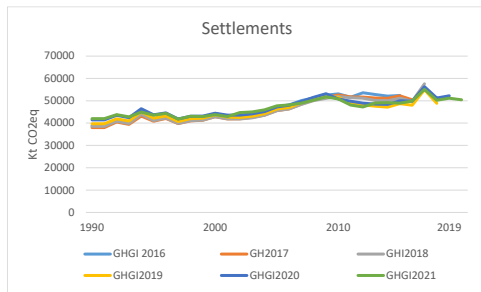
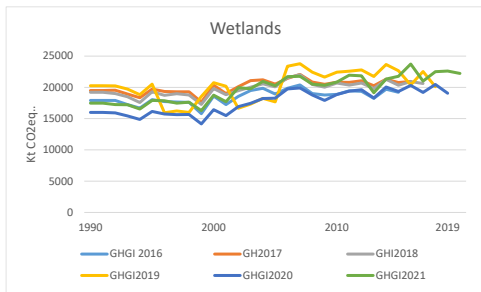
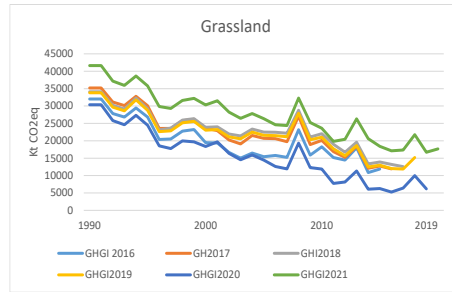
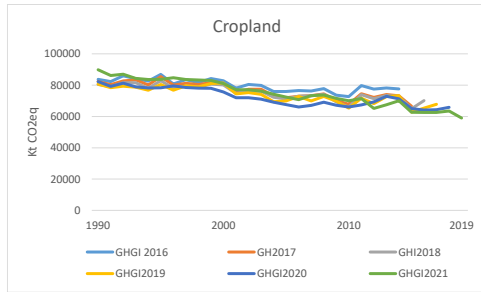
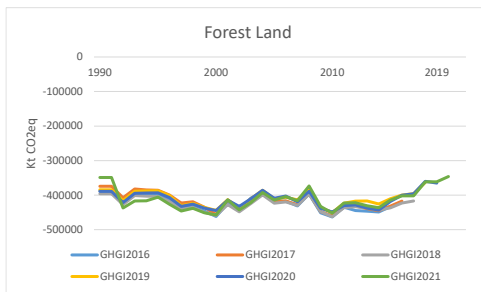


*Consistency applies for all reported years.*

*An inventory is consistent if the same methodologies and consistent data sets are used to estimate emissions or removals from sources or sinks across the time series.*

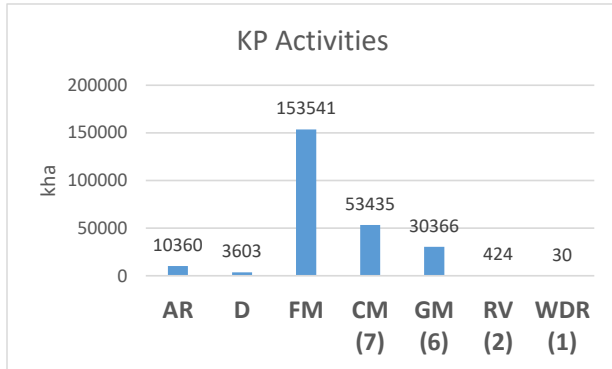
**Recalculations ensure the consistency and improve accuracy and/or completeness**

# Recalculations in the land use categories

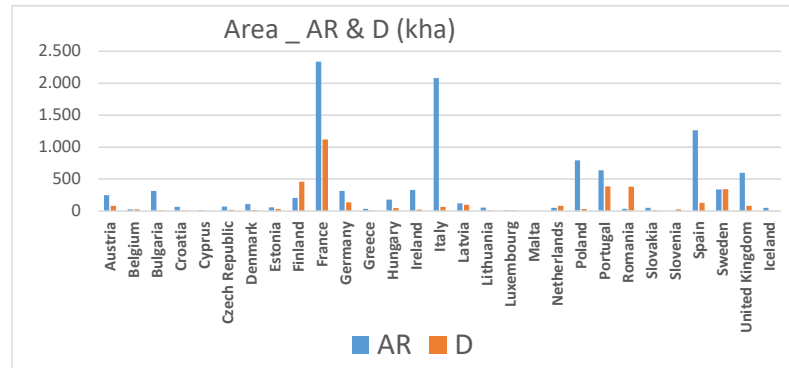




# KP-LULUCF



Total area under the KP is ca 252.000 kha and 55% of the area under the Convention.



Accounted emissions in Deforestation offset about 70% of the removals in Afforestation/Reforestation

# Accounting (provisional) quantities (Mt CO<sub>2</sub>eq,) under the KP

Member State	Accounting quantity							accounti
	Article 3.3		Article 3.4					
	AR	D	FM	CM	GM	RV	WDR	
Austria	-14,7	3,6	-20,9					-32,1
Belgium	-1,2	2,9	-5,9					-4,3
Bulgaria	-16,1	1,1	-0,5					-15,5
Croatia	-1,3	0,2	-6,9					-7,9
Cyprus	-0,3	0,0	-0,8					-1,0
Czech Republic	-3,7	1,5	20,3					18,1
Denmark	-2,5	3,1	-22,5	-18,5	-2,3			-42,8
Estonia	-2,0	3,9	-8,8					-7,0
Finland	-5,1	26,1	-43,6					-22,6
France	-103,0	83,9	13,2					-5,8
Germany	-4,2	9,9	-326,0	21,4	-56,3			-355,3
Greece	-0,9	0,3	-2,3					-2,9
Hungary	-8,5	2,2	-12,3					-18,7
Ireland	-29,0	3,9	1,0	-0,4	-2,6			-27,2
Italy	-55,8	13,8	-26,6	-34,8	-6,3			-109,6
Latvia	-1,6	6,4	11,7					16,5
Lithuania	-2,2	2,7	-9,1					-8,6
Luxembourg	-1,2	0,3	-0,4					-1,3
Malta	NO	NO	0,0					0,0
Netherlands	-4,3	8,5	-0,4					3,8
Poland	-15,5	14,2	-50,9					-52,3
Portugal	-20,3	14,4	-9,8	-20,9	-10,6			-47,3
Romania	-3,4	31,0	-133,8			3,2		-103,0
Slovakia	-3,6	0,4	-12,5					-15,7
Slovenia	NO	1,6	26,0					27,6
Spain	-47,1	4,4	-45,7	-12,3				-100,7
Sweden	-7,6	22,8	-75,5					-60,3
United Kingdom	-13,7	12,2	-3,3	-36,6	5,1		-0,5	-36,7
Iceland	-1,8	0,0	-0,1			-1,6		-3,4

*The table displays provisional information since the real accounting of the KP activities will take place in 2022 with the submission of the last inventory under the KP-CP2*

*Accounting at the end of the second commitment period for all individual inventories except Denmark and Hungary.*

# Forest management reference levels and technical corrections

Member State	Value inscribed in the Appendix to the annex to decision 2/CMP.7 (kt CO <sub>2</sub> eq/yr)	Technical correction
Austria	-6516	5823
Belgium	-2499	1430
Bulgaria	-7950	NA
Croatia	-6289	905
Cyprus	-157	NA
Czech Republic	-4686	NA
Denmark	409	-83
Estonia	-2741	NE
Finland	-20466	-10938
France	-67410	21795
Germany	-22418	5268
Greece	-1830	210
Hungary	-1000	-169
Ireland	-142	-934
Italy	-22166	-1680
Latvia	-16302	11703
Lithuania	-4552	-922
Luxembourg	-418	182
Malta	-49	49
Netherlands	-1425	360
Poland	-27133	NA
Portugal	-6830	3369
Romania	-15793	NE
Slovakia	-1084	-2606
Slovenia	-3171	NE
Spain	-23100	NO
Sweden	-41336	8536
UK	-8268	-8375
Iceland	-154	77

19 EU MS, UK and Iceland implemented technical corrections in order to ensure consistency between the FMRL and the reporting of FM activity

## Natural disturbances under AR and FM

- **13 MS, UK & ISL** have stated the intention to exclude emissions resulting from Natural disturbances affecting **AR** during CP2.
- **18 MS, UK & ISL** have stated the intention to exclude emissions resulting from Natural disturbances affecting **FM** during CP2.

So far, emissions excluded from natural disturbances have not been excluded:

- ✓ *They did not exceed the BGL + margin,*
- ✓ *The areas were subject to salvage logging,*
- ✓ *Or the requirements for excluding emissions from ND were not fulfilled.*

# Thank you