

Carbon stock changes in the transition from young to mature forests

JRC workshop on LULUCF 26 & 27 May 2015

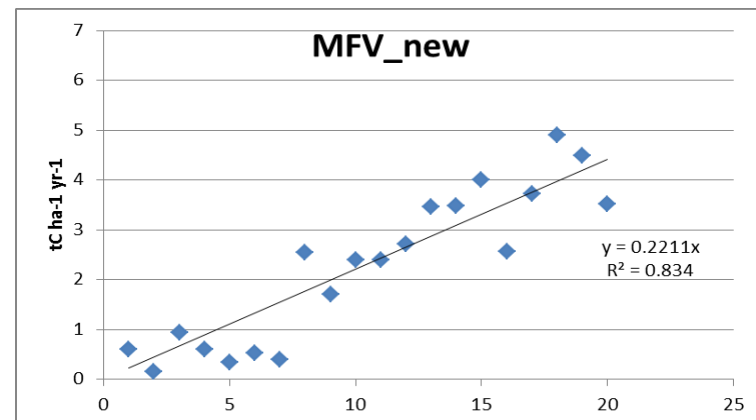
Eric Arets and Geerten Hengeveld



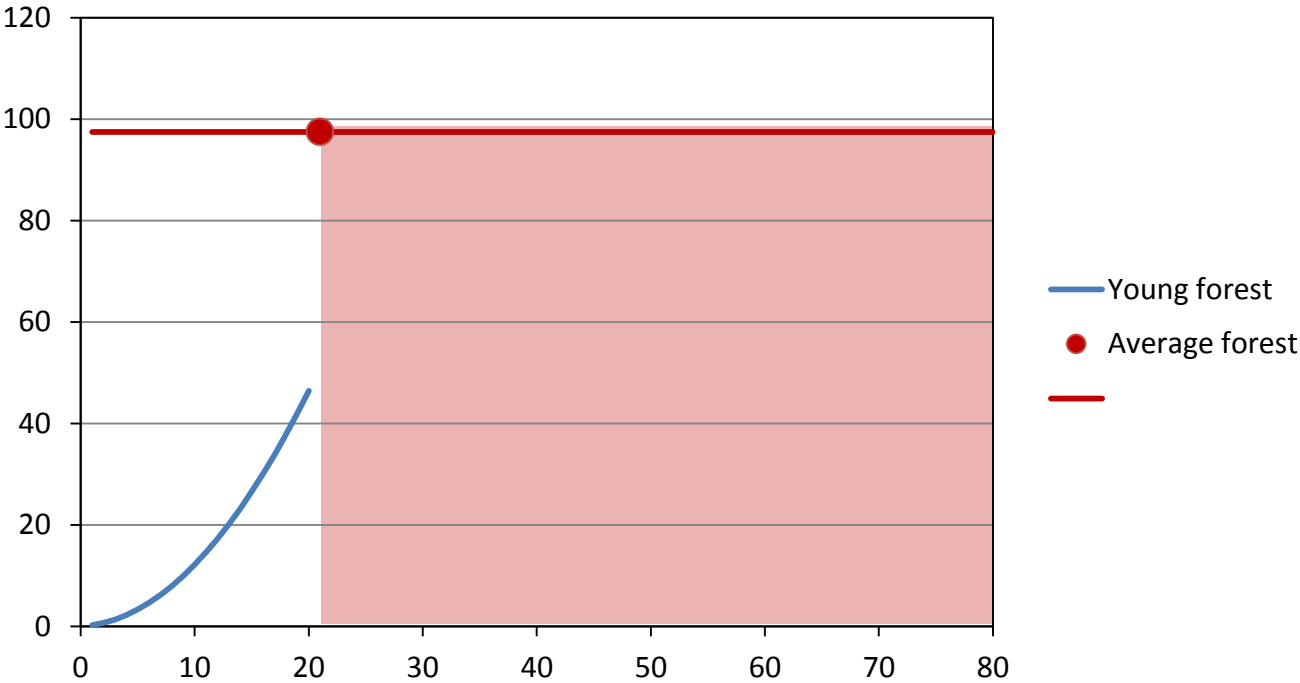
Transition from young to mature forest in afforestation

■ Current situation

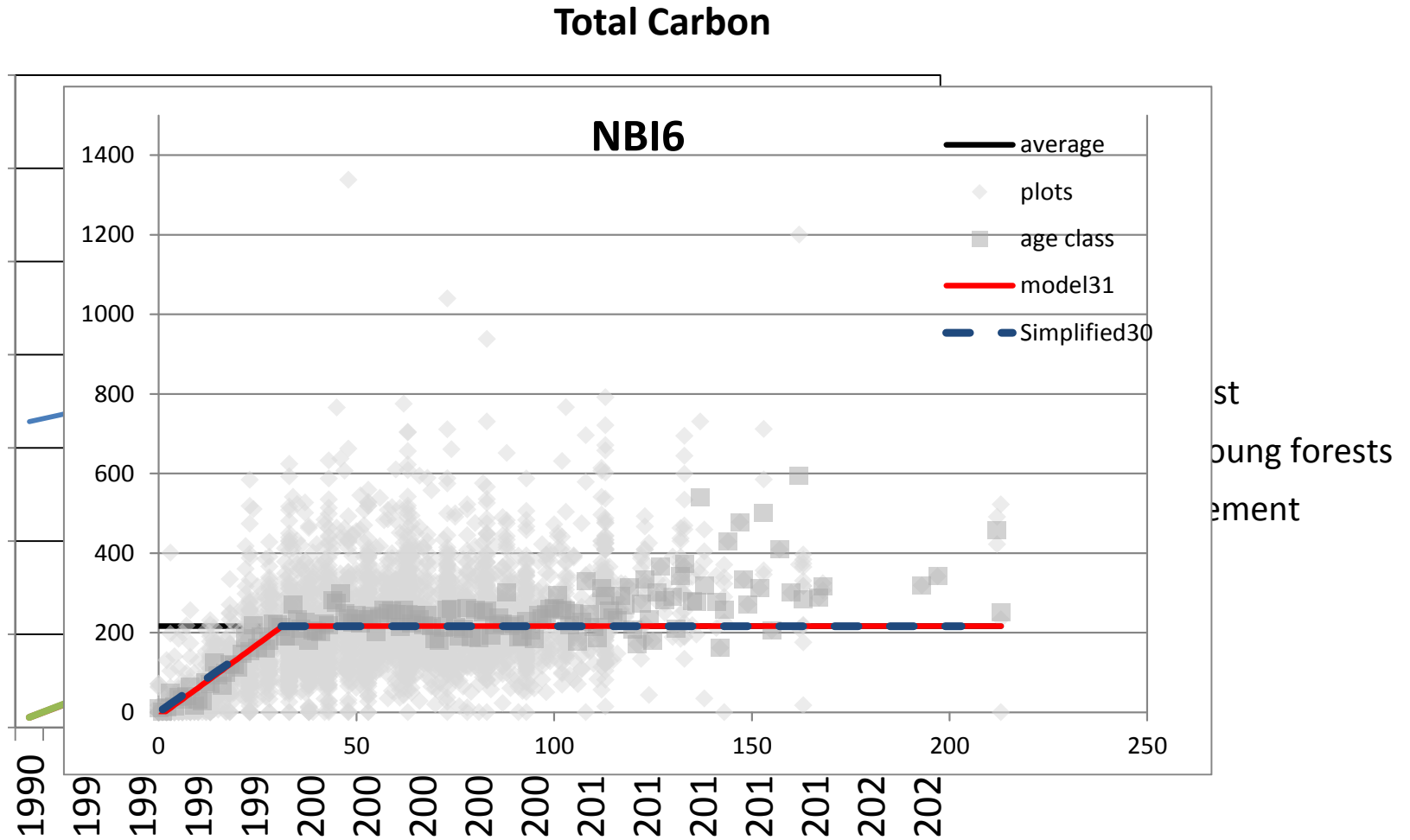
- The age at which the transition from young to old afforestation occurs is not based on data, but based on the default delay period from the LULUCF guidelines.
- Age dependent carbon uptake by young forests is based on data from National Forest Inventories



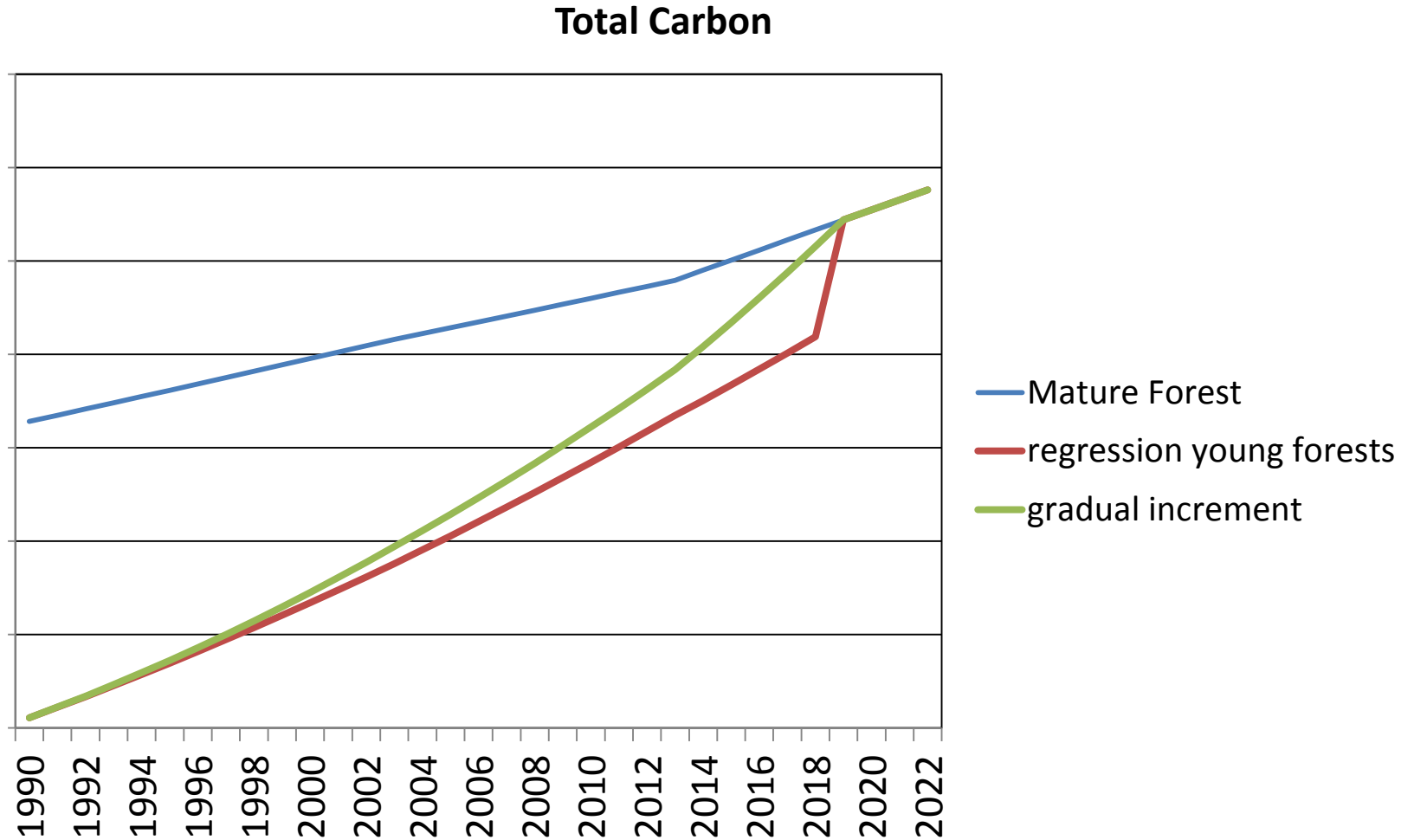
Transition from young to average forest



Possible solutions under consideration



Possible solutions under consideration



Comments, suggestions, other options?



Thank you!

eric.arets@wur.nl

