



# Unit D.1 - Bioeconomy

***JRC Workshop “LULUCF in transition: present and future challenges for LULUCF reporting and accounting”***

*Luisa Marelli*

*7 June 2021*



**JRC Mission:** “As the science and knowledge service of the Commission our mission is to support EU policies with independent evidence throughout the whole policy cycle”.

- **Independent** of private, commercial or national interests
- **Policy neutral:** has no policy agenda of its own
- Works for more than **20 EC policy departments**

# JRC sites

Headquarters in **Brussels**  
and research facilities located  
in **5 Member States:**

Belgium (Geel)

Germany (Karlsruhe)

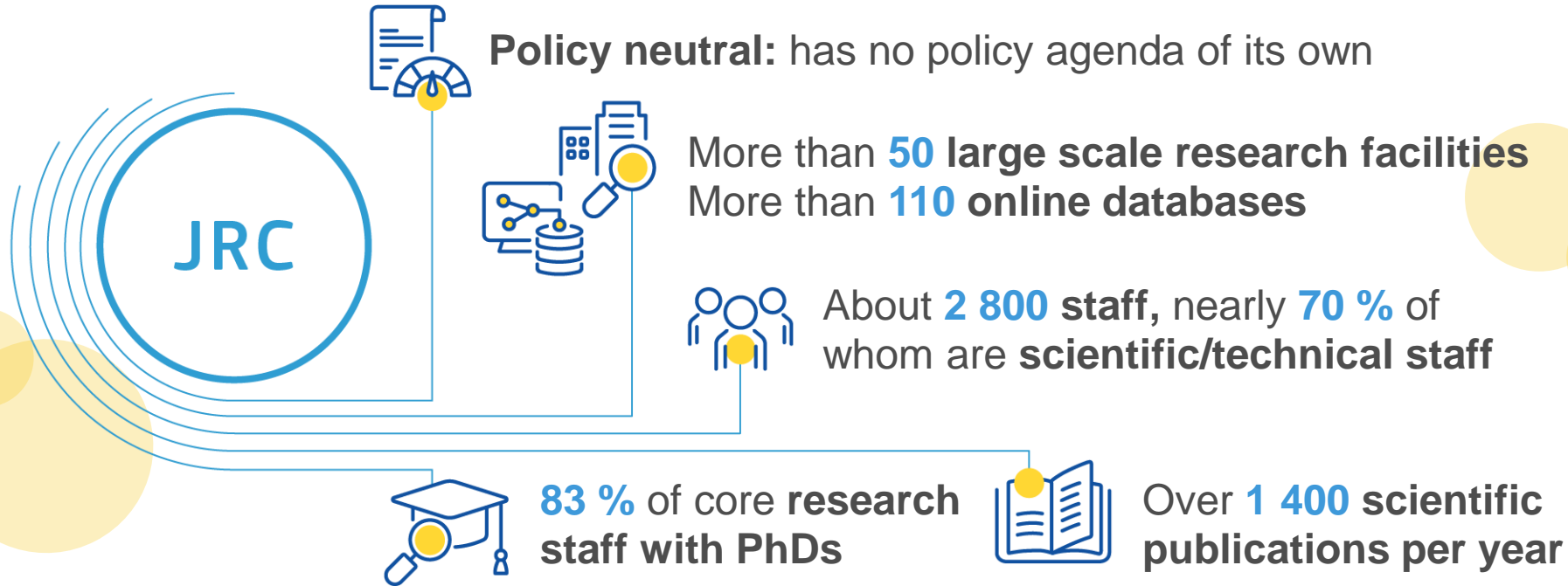
Italy (Ispra)

The Netherlands (Petten)

Spain (Seville)

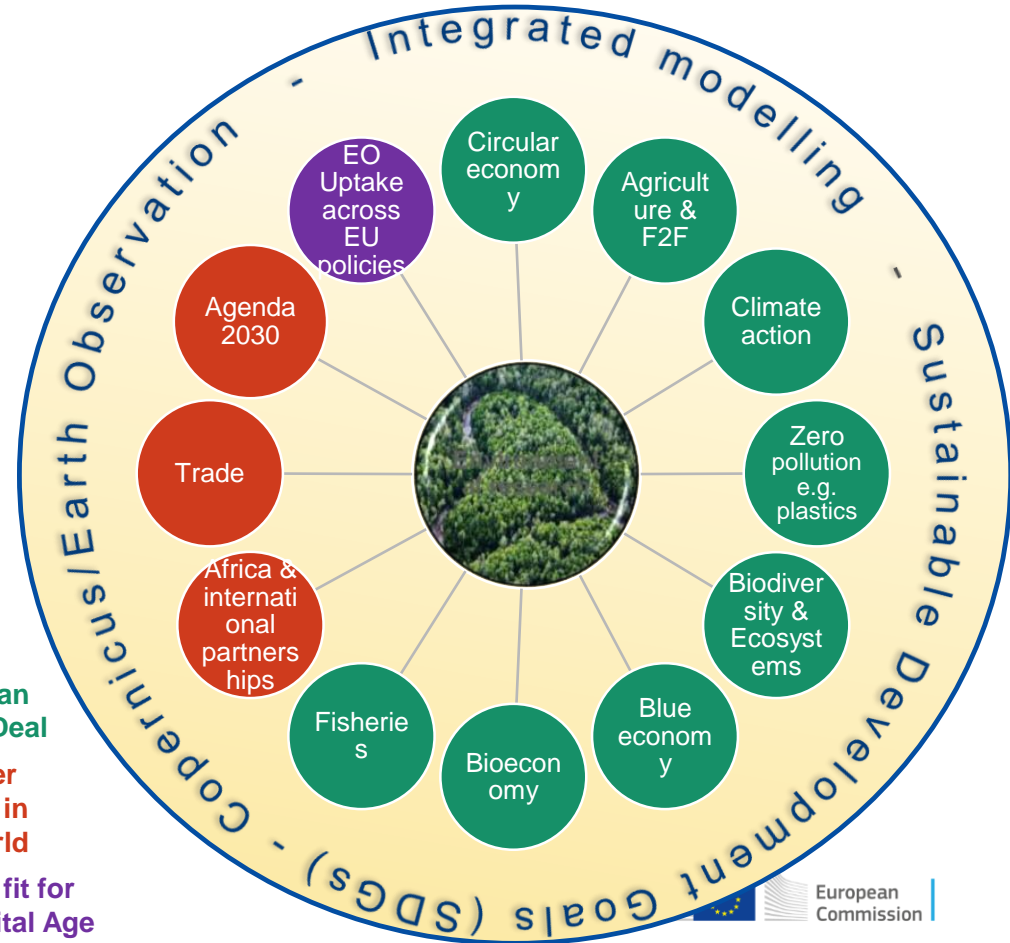


# JRC role: facts and figures



# Dir D – Sustainable Resources

Integrated policy analyses for cross-cutting political priorities



- European Green Deal
- Stronger Europe in the World
- Europe fit for the Digital Age

# JRC.D1 - Activities

## What



**Bioeconomy**



**Forests**



**Land & climate**



**Environmental Compliance Assurance**



**SDGs**



## Why



## How

**Knowledge Centre for Bioeconomy**

& Bioeconomy Monitoring system

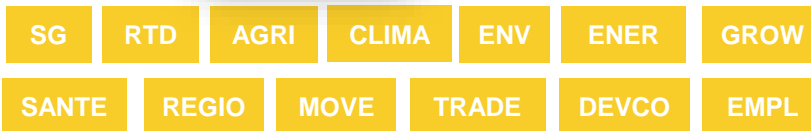
**EU Observatory on Deforestation and Forest Degradation**

**GHG inventories, LULUCF**

**National Climate/Forests Plans**

**Geospatial intelligence**

**SDG toolbox for EU Policies**



# Thank you



© European Union 2020

Unless otherwise noted the reuse of this presentation is authorised under the [CC BY 4.0](https://creativecommons.org/licenses/by/4.0/) license. For any use or reproduction of elements that are not owned by the EU, permission may need to be sought directly from the respective right holders.



# JRC LULUCF workshop 2021

## Introduction and agenda

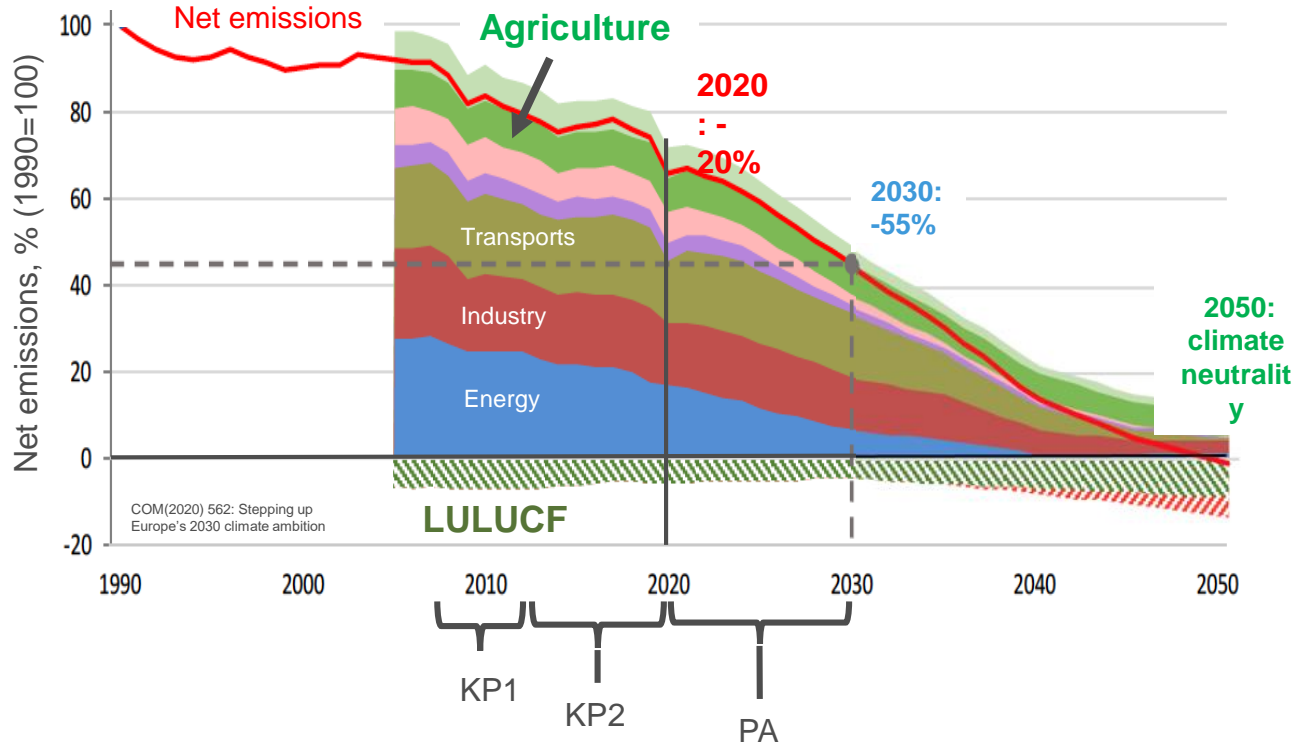
***G. Grassi***

*Joint Research Centre, Ispra*

***JRC LULUCF workshop, 7 June 2021***



# LULUCF in the EU climate targets: a long and winding road



COM(2020) 562: “to track progress towards climate neutrality the full net LULUCF sink needs to be included”.



- Further increase confidence in numbers
- Stop & reverse the current decline of LULUCF sink



- 2018/841
- Fit-for-55 proposals (upcoming)

Reporting	*	**	***
Accounting	*	**	***

→ The progressive inclusion of LULUCF in the climate targets follows the confidence on its numbers

# AGENDA

7 June 2021

*Present challenges for LULUCF reporting and accounting*

14:00-14:10	<b>Welcome</b> Luisa Marelli, Giacomo Grassi
14:10-14:25	<b>Overview of LULUCF inventory at EU level</b> Giacomo Grassi, Raúl Abad Viñas
14:25-14:40	<b>Results of 2021 QAQC checks and 2020 draft UN ARR of the EU GHGI for LULUCF</b> Raúl Abad Viñas
14:40-15:10	<b>MRV of LULUCF inventories - first results of the trial LULUCF review</b> Claire Qouf, Peter Iversen
15:10-15:25	Coffee break
15:25-15:55	<b>Review of 2021 submissions decision 529/2013</b> Simone Rossi
15:55-16:30	<b>Interactive poll 1</b> Moderated by Raúl Abad Viñas
16:30-16:50	<b>Estimating conversion-induced carbon stock changes in mineral soils - a case study from Hungary</b> Zoltan Somogyi
16:50-17:00	<b>Discussion session</b>
17:00-17:20	<b>Closing the KP2: Forest Management Reference Level and Technical Corrections</b> Giacomo Grassi, Raúl Abad Viñas
17:20-18:00	<b>Technical discussion around Forest Management Reference Level and Technical Corrections</b> Interested participants only

## *Future challenges for LULUCF reporting and accounting*

### *Future challenges for LULUCF reporting and accounting*

09:00-09:30 **Points of attention for LULUCF reporting under Regulation 2018/841**

Eric Arets

09:30-10:00 **LULUCF inventory developments**

Raúl Abad Viñas

10:00-10:15 **Coffee break**

10:15-11:00 **Relevant updates in IPCC 2019 Refinement**

Sandro Federici

11:00-11:20 **Forest Reference Levels for 2021-2025**

Anu Korosuo

11:20-12:10 **Interactive poll 2**

Moderated by Viorel Blujdea

12:10-12:30 **Discussion session**

12:30-14:00 **Lunch break**

## *Science for GHG inventories*

14:00-14:20 **HoliSoils**

- Holistic management practices, modelling & monitoring for European forest soils

Aleksi Lehtonen

14:20-14:40 **Synergies between the CAP new delivery model and LULUCF inventories**

Emanuele Lugato

14:40-15:20 **On the role of Copernicus products in support of LULUCF inventory complication**

**Case study 1 – FPA Copernicus User Uptake Action 2019-2-49 in Spain: Developing support for monitoring and reporting of GHG emissions and removals from LULUCF**

Jose Manuel Álvarez-Martínez, María José Alonso Moja

**Case study 2 – Finland: Experiences with Copernicus data in detection and monitoring land use and land-use change**

Tarja Tuomainen

15:20-15:45 **Perspectives of remote sensing for the monitoring of forest resources**

Alessandro Cescatti, Giacomo Grassi

15:45-16:00 **Coffee break**

16:00-16:20 **Estimating and reporting of emissions/removals from living biomass/DOM and HWP associated with windthrow**

Sebastian Rüter

16:20-16:40 **Accounting emissions from natural disturbances: challenges and methodological issues**

Roberto Pilli

16:40-17:00 **Interactive poll 3**

Moderated by Simone Rossi

17:00-17:50 **Discussion session**

17:50-18:00 **Conclusions**

## Recent LULUCF-relevant JRC studies (not covered in this workshop)



JRC SCIENCE FOR POLICY REPORT

### The use of woody biomass for energy production in the EU

Camia A., Giuntoli, J., Jonsson, R., Robert, N.,  
Cazzaniga, N.E., Jasinevičius, G., Avitabile, V.,  
Grassi, G., Barredo, J.I., Mubareka, S.

2021

file:///Users/grassgc/Downloads/jrc-forest-bioenergy-  
study-2021-final\_online.pdf



## Brief on the role of the forest-based bioeconomy in mitigating climate change through carbon storage and material substitution

<https://publications.jrc.ec.europa.eu/repository/handle/JRC124374>

**Authors:** GRASSI Giacomo; FIORESE Giulia; PILLI Roberto;  
JONSSON Klas; BLUJDEA Viorel; KOROSUO Anu; VIZZARRI  
Matteo

