



JRC's activities

Directorate Sustainable Resources

Bioeconomy Unit

LULUCF Workshop, 20-21 June

G. Maenhout

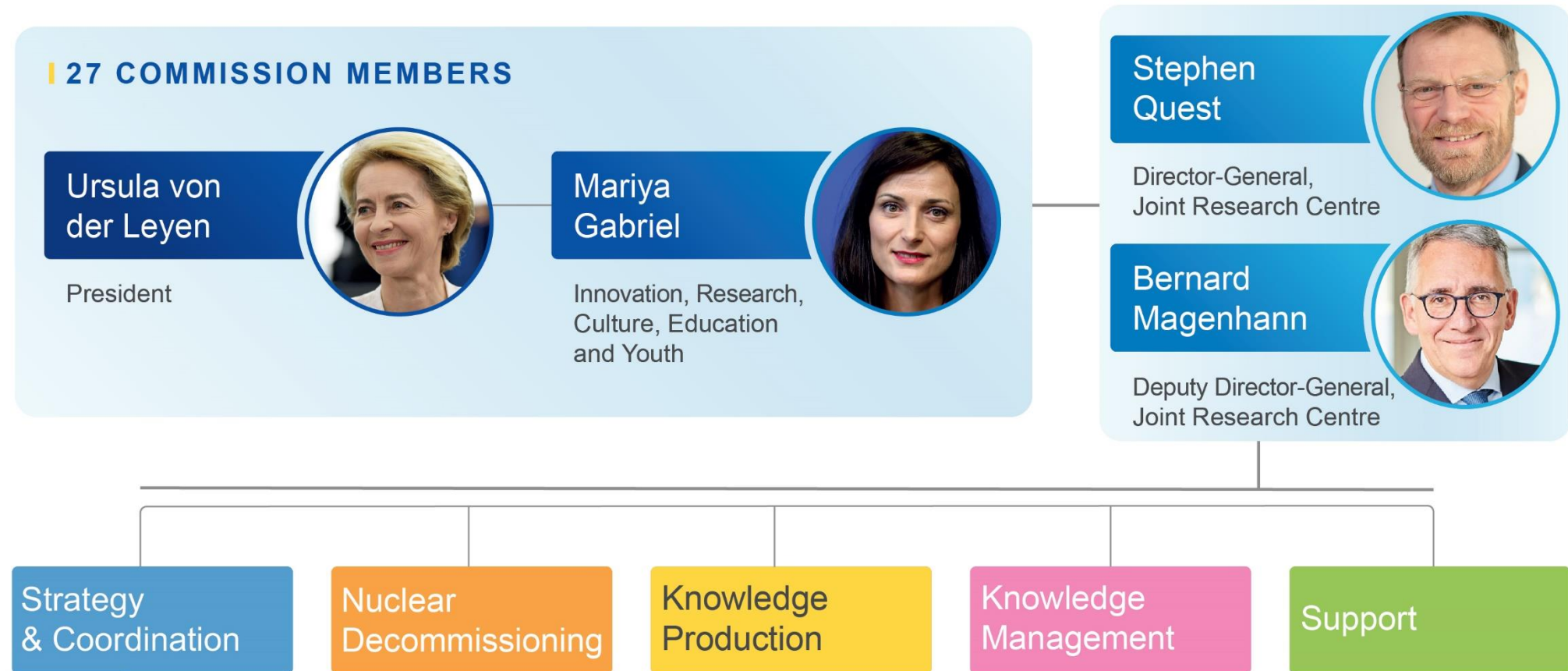
JRC sites

Headquarters in **Brussels**
and research facilities located
in **5 Member States:**

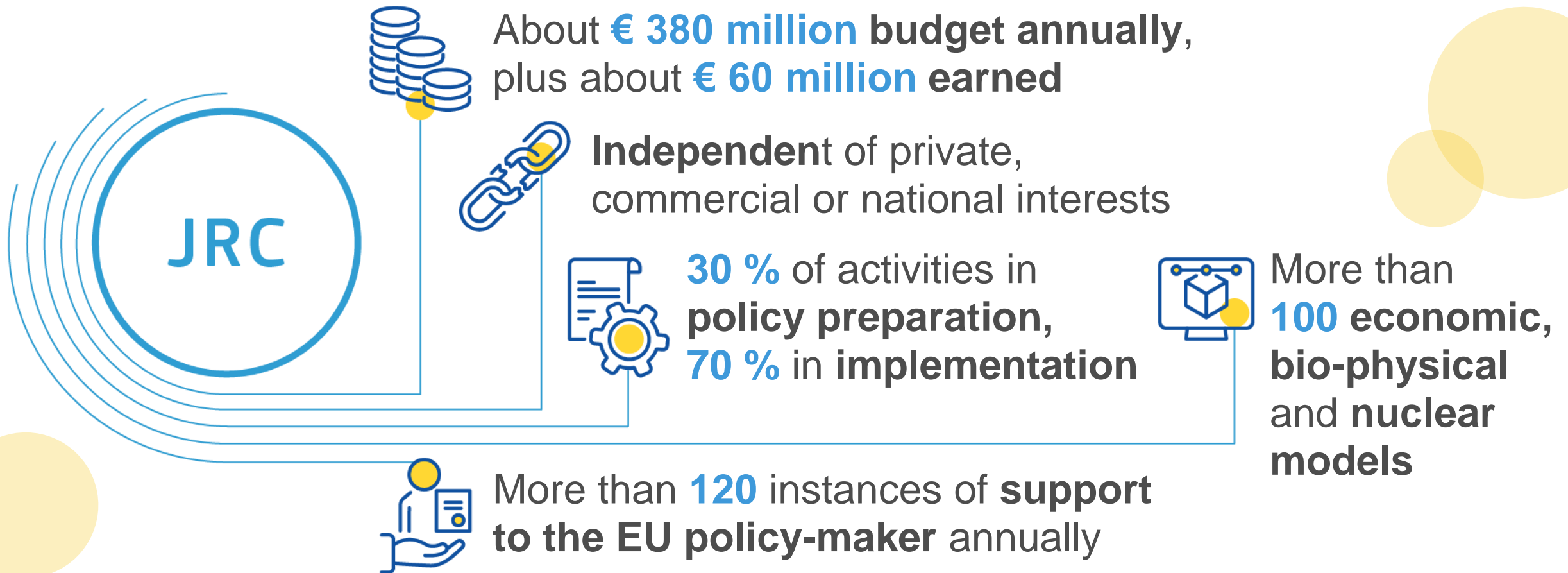
- Belgium (Geel)
- Germany (Karlsruhe)
- Italy (Ispra)
- The Netherlands (Petten)
- Spain (Seville)



The JRC within the Commission



JRC role: facts and figures



JRC role: facts and figures



Policy neutral: has no policy agenda of its own



More than **50** large scale research facilities
More than **110** online databases



About **2 800** staff, nearly **70 %** of whom are **scientific/technical staff**



83 % of core research staff with PhDs



Over **1 400** scientific publications per year

JRC role

- **Independent** of private, commercial or national interests
- **Policy neutral:** has no policy agenda of its own
- Works for more than **20 EC policy departments**



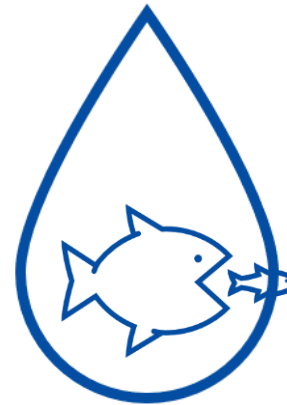
Directorate D focus



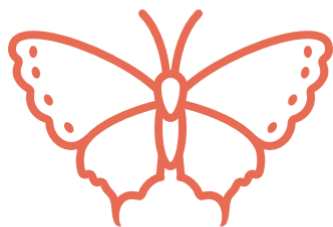
LAND & SOIL



FORESTS



WATER &
MARINE RESOURCES



BIODIVERSITY



RAW MATERIALS



BIOECONOMY

Forests and Bioeconomy



Biodiversity Strategy

LULUCF

New CAP

Bioeconomy Strategy



Soil Strategy

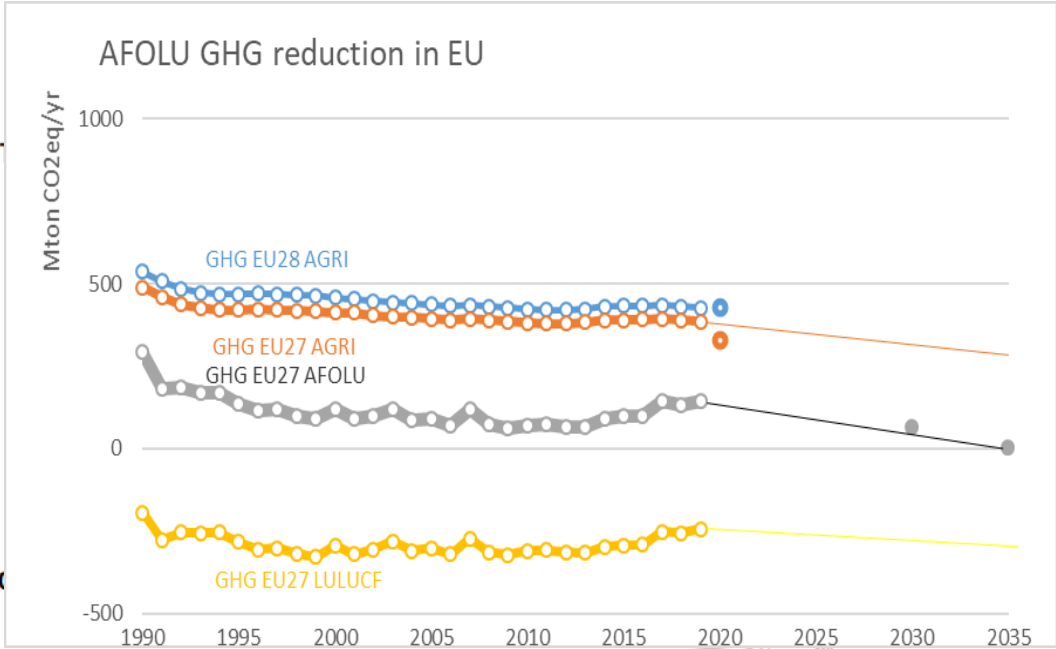
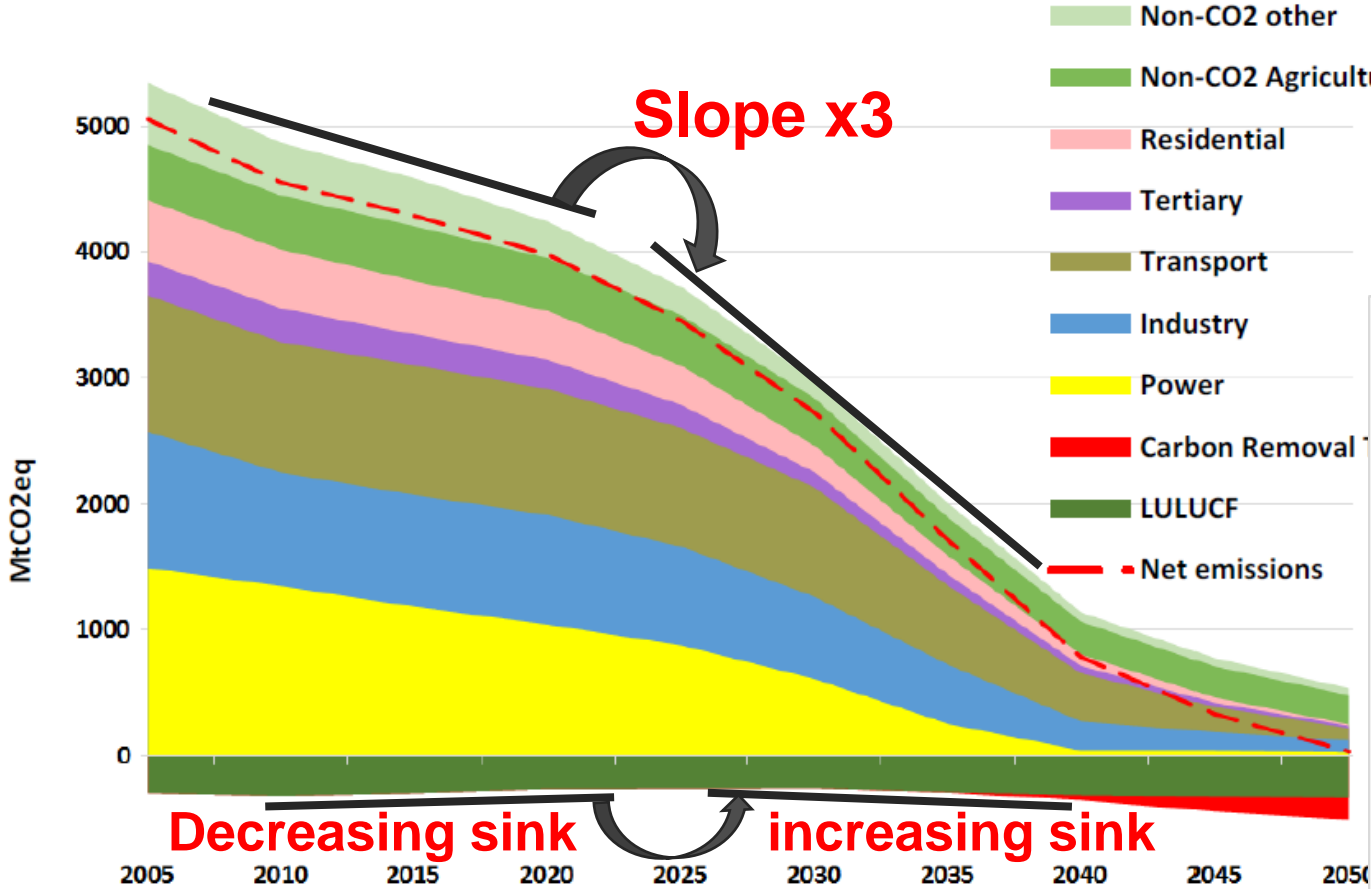
Zero Pollution

Forest Strategy

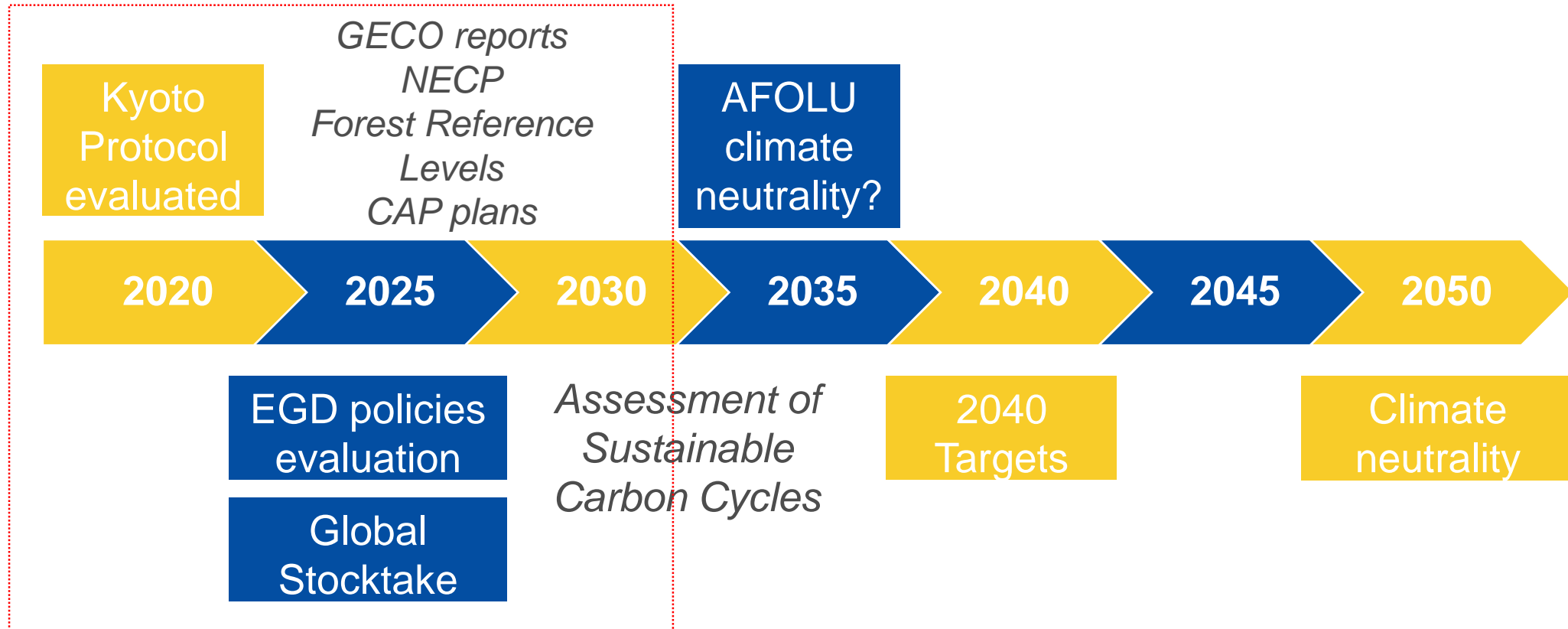
Industrial Strategy

RED II

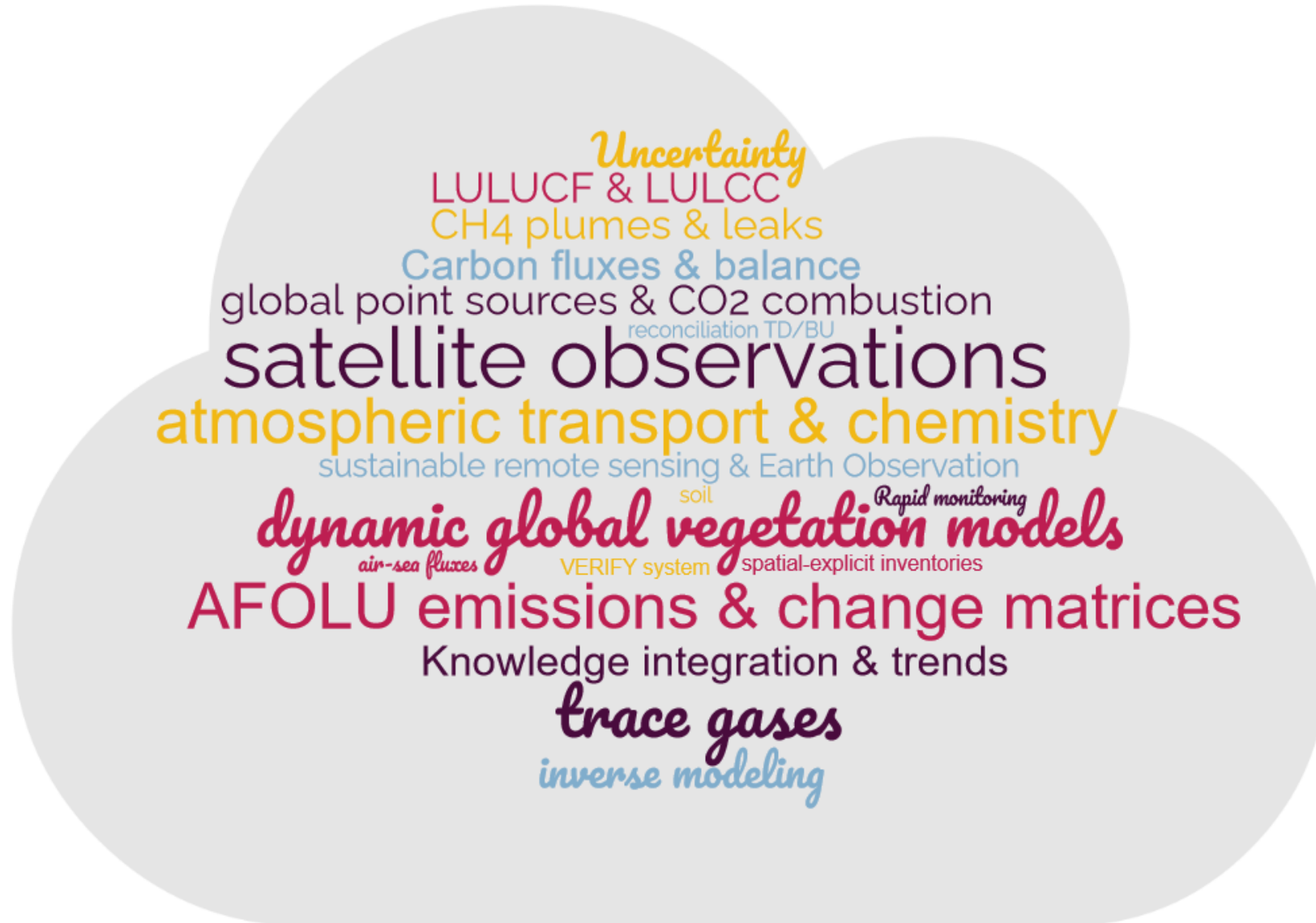
Climate Neutrality: A cross-cutting transition



Progress towards 2030 EU targets



Suggestions for future research



Thank you



© European Union 2021

Unless otherwise noted the reuse of this presentation is authorised under the [CC BY 4.0](https://creativecommons.org/licenses/by/4.0/) license. For any use or reproduction of elements that are not owned by the EU, permission may need to be sought directly from the respective right holders.

Slide 2: © Jukan Tateisi – unsplash.com